



In This Issue

President's Message – 1

Class of 2015-2016 Honor
Roll of Graduates – 2 - 8

Meet the Trustees - 9

Donor Form – 10



Graduation Issue

***Congratulations
to the members
who are
graduating this
year.***



CONGRATULATIONS GRADUATES OF 2015-2016

Congratulations, GRADUATE! You have truly earned your feeling of accomplishment. After all, it's been a hard four years of classes, working, internships, etc. NOW comes the hard work; of settling into a new job, new location, new friends and new opportunities. You've spent four years learning new things, but your "learning" has just begun. Don't worry – what you have learned along the way will be invaluable to you as you move forward. Also, the leadership you have learned through your PCT activities will serve you well in your future career development.

I have asked Sandra Finley, Executive Director, to send a quote for my letter to you. You have been working closely with Sandra during your collegiate years and hopefully, you will continue to do that after your graduation. Here is her response to my request:

Dear Graduate, CONGRATULATIONS on achieving this milestone in your life. We have truly enjoyed having you as a collegiate member and we appreciate the time that you have put into making your chapter successful. We hope that you take the adage of "Once a Phi Chi Theta, Always a Phi Chi Theta" to heart and stay involved as an alum.

Being an alum is a totally different experience than being a collegiate. The time commitment is much less and you can decide the level of involvement you have time for – whether you want to serve on a National committee, work with the Phi Chi Theta Educational

Foundation or serve as a mentor in the National Mentoring Program. It also offers great networking opportunities. Be sure to sign up for the Alumni Connections Directory to stay in touch.

*Your membership will automatically change from collegiate to alumni-at-large status when you graduate. We encourage you to either join or start an alumni chapter. Katie Griffin, our Vice President of Expansion, can assist you with starting a chapter. Just let her know if this is something you are interested in. Her email address is VPexpansion@phichitheta.org. Again, **CONGRATULATIONS!!!***

Fraternally,

Sandra

*Sandra Finley, Executive Director
Phi Chi Theta
1508 E Belt Line Rd Suite 104
Carrollton, TX 75006
(972)245-7202"*

I want to take this opportunity to thank Sandra Finley and the Phi Chi Theta Fraternity for assisting the Phi Chi Theta Educational Foundation to achieve its mission and scholarship assistance.

Fraternally,

Fran Spencer

Fran Spencer, President
Phi Chi Theta Educational Foundation

Honor Roll of Graduates – 2015 - 2016

Congratulations to the graduates! The following graduating seniors responded to the Phi Chi Theta Educational Foundation's request for information about chapter, major and career plans. The graduates are listed by alpha list of chapters.

Alpha Iota Chapter, Pennsylvania State University



Taylor Olson - B.S., Marketing Information Systems. Will be employed by Audi of America. Plan to continue affiliation with Phi Chi Theta by joining an alumni chapter. Graduation Date: May 8, 2016.



Kylie Tobasco, - Master of Accounting and Finance. Plan to continue affiliation with Phi Chi Theta by becoming a Life Member.

Alpha Mu Chapter, University of Maryland



Nicole Centi, - B.S., Marketing and Supply Chain Management, Minor in Global Poverty, Employed at Oracle as a Master Scheduler. Plan to continue affiliation with Phi Chi Theta, by joining an alumni chapter. Graduation date: May 21, 2016



Alpha Upsilon Chapter, Bradley University



Jennifer Dzedzik - B.S., Marketing. Looking for a Marketing Research or Social Media Marketing position, preferably for the Chicago Blackhawks. Graduation date: May 14, 2016



Alpha Omega Chapter, Rutgers University



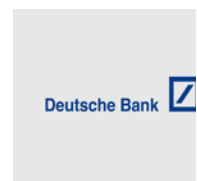
Danielle Pocock - B.S., Finance. Will be attending Graduate School at the University of Chicago Law School. Plan to continue affiliation with Phi Chi Theta by joining an alumni chapter. Graduation Date: May 15, 2016



New York Beta Chapter, New York University



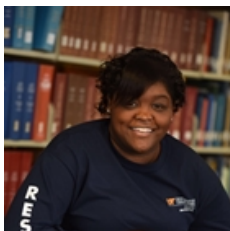
Rose Gao - B.S., Economics. Will be employed by Deutsche Bank as a Business Analyst. Plan to continue affiliation with Phi Chi Theta by joining an alumni chapter. Graduation Date: May 18, 2016



Tsedaye Kifle - B.S., Information Systems. Employed by Morgan Stanley, Financial Analyst, New York, New York. Will continue affiliation with Phi Chi Theta as a Life Member. Graduation Date: May 18, 2016



Beta Chi Chapter, University of Tennessee - Martin



Alicia Cooper - B.S., Management. Employed by Mass Mutual as a Financial Advisor. Plan to continue affiliation with Phi Chi Theta as a Life Member. Graduation Date: May 7, 2016



Beta Theta Chapter, Sam Houston State University



Chelsea Cooper - B.S., Finance. Looking for an Investments' job. Will continue affiliation with Phi Chi Theta as a Life Member. Graduation Date: May 7, 2016

Delta Mu Chapter, University of Texas at Austin



Robert Diamond - B.S., Finance. Employed at VMG Health as an Analyst. Plan to continue affiliation with Phi Chi Theta as a Life Member. Graduation Date: August 20, 2016



Epsilon Phi Chapter, Michigan State University



Jeremy Kozler – B.S., Finance. Employed by Barclays, Investment Banking Analyst. Plan to continue affiliation with Phi Chi Theta by joining an alumni chapter. Graduation Date: May 7, 2016



Gamma Iota Chapter, University of Colorado Denver



Emilio Hernandez - B.S., Business Administration. Looking for a position as an entrepreneur, Business Builder. Plan to continue affiliation with Phi Chi Theta as a Life Member. Graduation Date: December 12, 2015

Zeta Epsilon Chapter, Grand Valley State University



Leanna Beatty – B.S., Marketing. Employed by I-Heart Media, West Michigan. Plan to continue affiliation with Phi Chi Theta as a Life Member. Graduation Date: April 30, 2016.



Zeta Gamma Chapter, University of Illinois



Kelsey Bauer – B.S., Economics and Psychology. Employed by Morningstar, Morningstar Development Program. Graduation Date: May 15, 2016



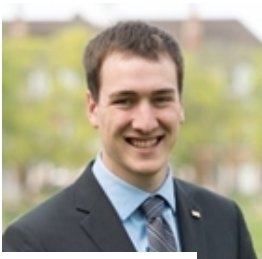
Tulsi Joshi – B.S., Accountancy and Finance, with a Spanish Minor. Employed by HealthScape Advisors. Graduation Date: May 15, 2016



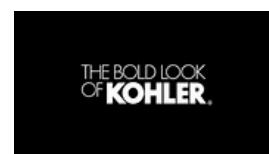
Sheri Lambesis – B.S., Supply Chain Management, Information Systems and Technology. Employed by Grainger as a Content Analyst. Plan to continue affiliation with Phi Chi Theta by joining an alumni chapter. Graduation Date: May 15, 2016



Darren Miller – B.S., IS/IT and Marketing. Chain Management. Employed by ABInBev. Plan to continue with Phi Chi Theta by joining an alumni chapter. Graduation Date: 5/15/2016



Bradley Reedy – B.S., Marketing. Employed by Kohler Company as an Associate Marketing Analyst. Plan to continue affiliation with Phi Chi Theta by joining an alumni chapter. Graduation date: May 15, 2016



Sheila Shenoy – B.S., Marketing and Management (International Business). Employed by Yelp. Plan to continue affiliation with Phi Chi Theta by joining an alumni chapter. Has been involved with the Foundation by writing an article for e-news. Has volunteered for another one-time project with PCT Foundation. Graduation date: May 15, 2016





Madeline Stanton – B.S., Accounting and Finance. Employed by EY. Plans to continue affiliation with Phi Chi Theta by joining an alumni chapter. Graduation Date: May 15, 2016



Blake Stumpf – B.S., Supply Chain Management. Employed by Boeing as Procurement Agent. Plans to continue affiliation with Phi Chi Theta by joining an alumni chapter. Graduation Date: May 15, 2016



Chris Tomasziewicz – B.S., Political Science. Employed by United Airlines as a Pricing/Revenue Management Analyst. Plans to continue affiliation with Phi Chi Theta by joining an alumni chapter. Graduation Date: June 14, 2016



Zeta Nu Chapter, Ohio State University



Rob Hovland – B.S., Marketing and Logistics. Employed by Fiat Chrysler Automobiles. Will continue affiliation with Phi Chi Theta as a Life Member. Graduation Date: May 18, 2016



David Thomas – B.S., Logistics Management and Marketing. Employed by EY, Advisory Staff. Plans to continue affiliation with Phi Chi Theta as a Life Member. Graduation Date: May 18, 2016





Jayna Wolfe – B.S., Logistics Management. Employed by Crane Worldwide Logistics. Plans to continue affiliation with Phi Chi Theta as a Life Member. Graduation Date. May 18, 2016



Jerry Yang – B.S., Accounting, Management and Information Systems. Employed by American Technology Consulting. Plans to continue affiliation with Phi Chi Theta as a Life Member. Graduation date: May 18, 2016



Zeta Omicron Chapter, University of California, Riverside



Alyssa Stump – B.S., Business Administration. Will be attending Graduate School at the University of California, Riverside. Plans to continue affiliation with Phi Chi Theta as a Life Member. Graduation Date: June 10, 2016



**PHI CHI THETA EDUCATIONAL FOUNDATION
TRUSTEES**

Frances Spencer, President
franspencer39@gmail.com

Annette Stewart, Secretary
Stewart_annette.g@gmail.com

**Mary Ellen Lewis, Treasurer and Scholarship
Chair**
Editor of e-news
PCTEdscholarship@aol.com

Missy Bolin, Assistant Treasurer
melissa_bolin@hotmail.com

Gary Hodge, Phi Chi Theta President
President@phichitheta.org

Dr. Danity Little
Dlittle467@cfl.rr.com

Dr. Peter Miller
Petermiller3@gmail.com

Other Important Contacts

Official Mailing Address:

Phi Chi Theta Educational Foundation
1508 East Belt Line Road, Suite 104
Carrollton, TX 75006

General Information and Inquiries:
FoundationInfo@phichitheta.org

Scholarship Program:
PCTEdscholarship@aol.com

Foundation's Web Site:
<http://www.phichitheta.org/foundation>



Contributors to this newsletter: Frances Spencer, Mary Ellen Lewis, Sandra Finley and Elizabeth Danford and the graduating class of 2015 – 2016

Next Issue – Scholarship Awardees – September/October Issue

Phi Chi Theta Educational Foundation Donation Form

Yes, I want to make a tax deductible contribution of \$ _____

Please use my gift for the following purpose (select one or more):

- Naomi L. Satterfield Memorial Scholarship
- Irene M. Meyer Memorial Scholarship
- Dr. Kay Durden Memorial Scholarship
- Trustees' Scholarship
- Anna E. Hall/Helen D. Snow Memorial Scholarships
- General Fund (This fund includes educational grants to the fraternity.)

Name _____ Chapter _____

Address _____

City _____ State _____ Zip Code _____

Phone _____ E-Mail _____



Please make check payable and send to:
 Phi Chi Theta Educational Foundation
 1508 East Belt Line Road, Suite 104
 Carrollton, Texas 75006

THANK YOU!