



In This Issue

Happy Holidays!
Message from President
Greg Holden

Conversation with Mary
Ellen Lewis

Shop for a Cause – Our
Cause

Double Your
Money...The Easy Way

Meet our New Editor



*This Holiday
Season... take
some time to
reflect on your
achievements in
the past year...*



Happy Holidays!

Message from the President

As the Fall semester comes to a close and you look forward to taking some much-needed time off from school and work, I hope this time of year finds you gathering with friends and family to celebrate and share in the merriment of the season. From holiday baking to gathering around the fireplace, or toasting the New Year, take some time during this busy season to reflect on your achievements in the past year and plan your aspirations for the coming year.

The Phi Chi Theta Educational Foundation is thankful for another successful year in providing quality mission-focused programs and opportunities to you, the future generation of business leaders and professionals. By awarding over \$15,000 in scholarships and grants to date, the Foundation has been able to continue its commitment to funding educational programs that provide you with the personal and professional skills you will need to be successful in the international business

arena. As we look toward the New Year and beyond, the Foundation aspires to increase its awareness and educational and scholastic impact on Phi Chi Theta and its members. In addition to awarding \$4,000 worth of scholarships, we are planning an educational seminar, awards and recognition dinner, and a Live Auction for the 2008 National Chapter Meeting. I hope that you will join us in actively participating and supporting these programs in 2008.

All of these programs are made possible through your continued generosity

Season's Greetings from the Foundation

Foundation. Through your active participation in our national fundraising and outreach programs – Macy's Shop for a Cause, Silent and Live Auctions, and direct mailings – you are greatly assisting the Foundation in raising needed funds so that we can continue building educational programs and offering additional scholarships. Recently, we concluded our 2nd annual Macy's Shop for a Cause fundraising campaign in which we raised over \$600.

In this issue of [eEdNews](#), you can read more about the success of this national fundraiser, and in our continued Interview with a Board Member series, you can learn more about the architect behind its success. In this Season of Giving, we hope that your commitment to the ideals of Phi Chi Theta and the Foundation's commitment to educational and scholastic programs will inspire you to make an end-of-year donation and plans for

donating in the New Year. In many cases, your donations to the Foundation will be matched by your employer. By simply filling out a form provided by your employer, your donation of \$50 or \$100 can quickly become \$100 or \$200. In fact, we have received over \$8,300 from member-employer matching and service grant programs. Read more about options for Workplace Giving in this issue of [eEdNews](#).

As you plan your end-of-year donation and donations for the coming year, please take that extra step to check with your employer about a matching gift program.

On behalf of the Phi Chi Theta volunteer Board members that serve the Foundation, I extend warmest wishes to you and your family this holiday season and in the year to come.

- Greg Holden

A Conversation with Mary Ellen Lewis



Mary Ellen Lewis (Colorado Alpha – Univ. of Denver) has been a member for over 50 years,

having celebrated her diamond anniversary in 2006 as a Life Member of Phi Chi Theta. Today, Mary Ellen serves as the Treasurer and Scholarship Chair for the Phi Chi Theta Educational. She is past National President, an inductee of the Alumni Hall of Fame, and a recipient of the Anna E. Hall Memorial Award. Ms Lewis is actively retired after 31 years of service, including serving as Administrative Officer of the College of Business at University of Colorado at Denver. In a recent interview

with Frances Spencer, Mary Ellen shares many of her Phi Chi Theta experiences and her career-related assignments that took her to a variety of countries.

Fran: You have been a PCT member for over 50 years and are a past National President. What are two of your most memorable experiences in PCT?

Mary Ellen: There are many, but you asked for two.

1. Helping to establish the Gamma Iota Chapter, University of Colorado at Denver, in 1972.
2. Co-chairing the Phi Chi Theta 1976 Convention. In

those days, we did not have the privilege of having a Saundra Finley, so it was up to the chapters in Colorado to plan the convention -- hotel, speakers, flowers, side trips, theme, gifts, etc.

Fran: What did you enjoy most in your years working at the University?

Mary Ellen: My title was Administrative Officer in the College of Business and Administration. I worked closely with the Associate Dean of Administration. However, for the last 12 years of my working life with the University, I had the privilege of teaching a class every semester – "Managing Individuals and Work Groups."

A Conversation with Mary Ellen Lewis

This gave me the opportunity to work with students, in addition to preparing budget spreadsheets and forecasts for the Associate Dean.

Fran: You are a big Colorado Rockies, University of Colorado, and Denver Broncos fan. What else do you enjoy?

Mary Ellen: I am more of a football fan than a baseball fan. However, it was exciting to see the Colorado Rockies in the World Series, considering we were in 5th place at the beginning of September and then won 21 out of 22 games to get to the World Series. As a hobby, I collect elephant figurines. This hobby started in 1961, when I worked overseas, and now I have a gigantic collection. Despite this, *I still know the story about behind each elephant.*

Fran: During your professional career, you worked overseas for many years. Which country did you enjoy the most and why?

Mary Ellen: I worked in Thailand, Laos, Cambodia, and Pakistan, and I enjoyed working in all of them. You asked for one, so I would have to say Thailand. The Thai people were wonderful to me.

Fran: We know you are retired but are busier than ever. What are some of the activities you are involved in?

Mary Ellen: I have had several part-time jobs since retiring – chauffeuring three children back and forth to school; Frontier Airlines Ambassador (no pay; just free trips after every 20 hours of work). Right now, I volunteer at the Denver Hospice four hours a week, working in Medical Records. I also am the Treasurer for the Phi Chi Theta Educational Foundation. This means that I have had to master QuickBooks and prepare the IRS reports. *I am learning something new every day.* I thought that when I retired I would be reading mystery and spy novels. However, I am more apt to be reading “Financial Management for Nonprofit Organizations” and “QuickBooks for Dummies.”

Fran: The business world has changed so much since we entered it years ago. What words of advice would you offer to PCT graduates and collegiates?

Mary Ellen: *Find the career that you enjoy.* You should want to go to work every day because *you love what you do.* Hopefully, you will find a team of co-workers who appreciate what you bring to the table.

Fran: Why do you feel it is important that all PCT members support the Foundation?

Mary Ellen: This is the easiest question you asked. Members, this is your Foundation! You have nine Trustees who are all

Phi Chi Theta members; they are all volunteering their time on the Foundation. *The Foundation exists to support the members.*

Your monetary support provides your Foundation the means to provide you with educational and scholarship programs.

Fran: You have been Chairman of the PCT Scholarship Committee. What is the biggest error you've seen in the scholarship applications received?

Mary Ellen: If you look at the applications overall, they have been very professional and well thought-out, but there a few suggestions I can make.

Do not complete the application at the last minute. The Scholarship Committee can tell if it is a rush job. Also, if you decide at the last minute to complete an application, your letters of recommendation will seem that way as well, and your transcript may arrive after the deadline.

Do not answer the questions as though you think the Scholarship Committee will like your answer. Answer from the heart.

A sense of humor is always good, but since the Scholarship Committee does not know the writer, be careful that your answers are

4 A Conversation with Mary Ellen Lewis

not too cutesy.

Fran: Tell us one thing about yourself that you feel may be a surprise to our readers.

Mary Ellen: This is a hard one. Would you be surprised if you knew that I watch a soap (Days of Our Lives) . . . that I love to travel on cruises . . . that I have raised four standard poodles? The latest one, Farley, was born in August 2007.



Farley at four months

Fran: What part of your PCT experience over the years has been most beneficial to you

personally?

Mary Ellen: *Lasting friendships have been the most beneficial experience.* I enjoyed traveling to the chapters when I was District Director. As National President, I gained self-confidence and realized that members who backed my candidacy thought I could do it when I wasn't positive that I could.

Fran: Our society moves so fast with new technology, etc. What do you feel is one of the most significant changes over recent years and the impact on our daily lives?

Mary Ellen: It has taken me a long time to realize this, but don't you all think it is great that we can communicate by electronic means? I even like

spell check when it does not get me into trouble. I know for a fact that I would not be able to be the Treasurer for the Phi Chi Theta Educational Foundation without the use of a software package and my personal computer.

Fran: Okay – This is your paragraph. What would you like to add to this interview?

Mary Ellen: Thank you for giving me the opportunity to answer your questions although it has always been difficult for me to "toot my own horn." I always think people will automatically know what I am all about and I do not need to put it down on paper. *I have enjoyed my 51 years with Phi Chi Theta.*

-Frances Spencer



A Season of Giving America's Giving Challenge



In this Season of Giving, the Case Foundation has partnered with Parade magazine, Network for Good, GlobalGiving, and Causes on Facebook to sponsor the America's Giving Challenge and the Causes Giving Challenge. Through innovative Internet technologies and social networking sites they are providing exciting opportunities for individuals to support and bring attention to the causes they care about most; including the PCT Educational Foundation. The entire Challenge is designed to take place online, involving the use of such everyday activities as e-mailing, blogging, and social networking.

There are two ways to get involved:

- **Champion a Cause** and have the chance to get \$50,000 for the charity of your choice. The eight individuals whose charity badges attract the most unique donors through the America's Giving Challenge will get \$50,000 for their cause.
- **Give to a Cause** and help the charity you care about get \$1,000. The 100 nonprofits with the greatest number of unique donations made to them through America's Giving Challenge will each get \$1,000.

The Challenge begins December 13 at 3 pm EST and will close January 31 at 3 pm EST.

Shop for a Cause – Our Cause

Every October, Macy's holds a "Shop for a Cause" promotion, or a "Charity Day." For the past two years, Phi Chi Theta Educational Foundation has taken advantage of this fundraiser to raise additional funds for the Foundation's scholarship and professional programs.



The Trustees of the Foundation raised \$1,035 in 2006 and \$635 in 2007 through this resource. Now that is wonderful, but just think how many more dollars could be raised if you, as individuals or as a Phi Chi Theta chapter, would help the Foundation with this easy, once-a-year project. Mark your Phi Chi Theta calendar for September 2008, and when we contact you early that month, you will know what we are asking you to do to help the Foundation raise funds. It's very simple and takes little time or effort to participate. Here are some of the particulars regarding the "Shop for a Cause" fundraiser:

What is Shop for a Cause? This one-day shopping event, in every Macy's store nationwide, is one of the ways Macy's gives back to the community through support of local non-profit organizations. This year the event was on Saturday, October 13.

How do organizations raise funds? Participating organizations sell \$5 shopping passes to this one-day event. Your organization – in this case, the Phi Chi Theta Educational Foundation – keeps the total proceeds from every shopping pass you sell. It's that simple! No inventories, no event to manage, no food or entertainment to arrange. By purchasing a shopping pass, customers can support their favorite cause – the Phi Chi Theta Educational Foundation – while enjoying a day full of extraordinary discounts throughout the store. Think early holiday shopping!

Does Macy's keep a percentage of the ticket sales? No. All ticket proceeds go directly to the charity. In

our case, that would be the Phi Chi Theta Educational Foundation.

What are the special discounts? The \$5 savings passes entitle the bearer to special savings on select merchandise throughout the store in addition to regular and sale merchandise specials all day long.

Are there any specific rules regarding ticket sales? Yes. Tickets issued to each organization are treated as money, and must be sold uniformly, across the nation, for \$5 each. Tickets cannot be given away, and tickets cannot be mailed to individuals or companies in hope of generating a purchase. Each organization is asked to sell a minimum of 100 tickets prior to the event.



Double Your Money...the Easy Way

Do you think the only way to double your money is through a lottery? Or a trip to Las Vegas? Those may work, but let's talk about an easier, better way – through **workplace contribution programs**. Here's how it works:

Many companies encourage

their employees to participate in charitable giving by either matching the employee's donated amount or through special company foundations that give grants to the charitable organization of the employee's choice. For instance: If your employer has a matching program, and you donate \$50.00 to the Phi

Chi Theta Educational Foundation, your company would also donate \$50.00 for a total contribution of \$100.00.

The Foundation has received over \$8,000 from employer sponsored workplace giving programs.

Workplace Giving Programs

Many members or their spouses and family members took advantage of these programs in 2007 to support the Foundation, and the Foundation received several employer-employee matching donations including:

- **AIG Corporation**
(Lisa Shumway)
- **Wells Fargo**
(Helen Tran)
- **Pepsi Bottling Group Foundation**
(Mike & Lynnette Lemke)
- **First Tennessee Bank**
(Betsy Brasher)

Other companies have programs where the

employee applies for a grant naming a specific non-profit group, such as the Phi Chi Theta Educational Foundation. Over the past years, the Foundation has been fortunate to receive volunteer service grants from the **State Farm Foundation**, on behalf of Kim Gary, and **Booz Allen Hamilton**, on behalf of Greg Holden, to support our professional educational programs.

These are just two of the ways you can contribute through your workplace. Another avenue is through a regular payroll deduction program, where a set amount is deducted each week/month

from your payroll check on behalf of the charity, in this case the Foundation. You may not think \$10.00 per month is much, but it can add up to a significant contribution over the year.

All three programs are painless, easy ways for you to support the Foundation, whose sole purpose is to provide scholarships and educational programs for Phi Chi Theta members. Ask your employer today which of these programs is available to you and start 2008 with your contribution.

Meet our New Editor...Susan Stepan

Beginning with the September issue, Susan Stepan started as the new editor of eEdNews.

Susan joined Phi Chi Theta when she was a student at Northwestern University in the early 1970s and is currently an alumni member. Her career has spanned quite a range of positions, places, and responsibilities: on-air operations for radio stations in Chicago and Los Angeles, marketing communications for health care diagnostic system provider Beckman Instruments, hospital transcriptionist, manuscript editor for *Journal of Radiology*, and most recently, managing editor Andrew Corporation, a wireless electronics designer and manufacturer where she edited

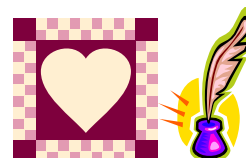
and submitted engineering papers for publication, developed website content, and prepared marketing and public relations materials.

During her more energetic, younger years, she volunteered with the restoration committee of the USS *Silversides*, a World War II submarine that was docked on the Chicago Lakefront from 1946 through 1979. She created a supporter newsletter, speakers' bureau, and oral history project, and organized crew reunions and press events. She took extra curricular courses in work-related business subjects as well as various needle crafts for fun.

Over 30 years ago, Susan rediscovered tap dancing and, in all, has tapped her way through

26 years of lessons, adding jazz and ballet along the way. Now, with some knee degeneration, she has relinquished tap for the kinder, gentler arts of tai chi and line dancing.

Susan retired from Andrew Corporation in 2006 and has devoted free hours to needlework crafts, including unfinished projects from years ago and newly learned quilting. She lives in Downers Grove, Illinois, and instead of relocating to a warmer climate, enjoys looking out at the snow and cold from the comfort of her kitchen table.





**The Phi Chi Theta Educational Foundation
Board of Trustees and Members of Phi Chi
Theta Fraternity wish you and your family
a Happy and Joyous Holidays and a
prosperous and healthy New Year.**

Greg, Fran, Mary Ellen, Caroline, Betsy, David, Dani, Tom & Mike

Our next Issue – February 2008

- Past Scholarship Winners Give Their “Do’s and Don’ts on Applications
- FAQs about the Phi Chi theta Scholarship Process
- Profile of Lester Richardson Memorial Scholarship
- Interview with Foundation President

To remove your name from our mailing list, [please click here](#).

Questions or comments? Email us at Foundationinfo@phichitheta.org or call (972) 245-7202