



In This Issue

President’s Message – 1

Honor Roll of Graduates –
Class of 2009 – 2

Phi Chi Theta The
Opportunity of a Lifetime –
To Last a Lifetime – 7

Where Are They Now? – 8

Taking it One Step at a
Time – 10

Interview with a
Scholarship Recipient – 11

Need a Scholarship for
Graduate School – 13

Business Etiquette Tip of the
Month – 13

News to Use – 14



Congratulations Class of 2009



This is a special time of year where you get to celebrate the success of your

academic achievements and the commitment you made in furthering your business education and training. As you approach this major milestone in your life, it is time to celebrate, take pride in your hard work, and give thanks to friends, family, and professors that have supported, challenged and encouraged you to do your best.



Through coursework and your involvement in Phi Chi Theta you have developed a foundation of business and interpersonal skills and functional knowledge that you will be able to bring forward and build off of in the workplace for years to come. You have achieved great results and gained invaluable skills that will enable you to succeed as you move on to the next stage of your professional development. Wherever your next steps take you, may they present you with the challenges and opportunities that will enable you to succeed in building your own future.

In this special issue of eEdNews, we celebrate the success and next steps for the Class of 2009. I’ll share some words of advice that will help you succeed and grow



as you move on to the next stage of your professional development.

We also catch up with the 2007 scholarship recipients to see “Where are They Now”, and how the Phi Chi Theta experience has helped them in their professional and personal growth. Fran Spencer (Delta), shares her perspective and advice on how being a member of Phi Chi Theta is an opportunity of a lifetime, that lasts a lifetime. In our new segment, “Interview with a Scholarship Recipient”, you’ll meet and learn more about Katherine Griffin (Beta Nu), recipient of the 2008 Anna E. Hall Memorial Scholarship.

**“Once a Phi
Chi Theta,
Always a Phi
Chi Theta”**



This is a saying you hear frequently, and is a saying that each of takes to heart as

members of this great Fraternity. It also represents the lifetime opportunity afforded to each of us when we joined, that lasts for a lifetime. As you transition to becoming Phi Chi Theta alums and begin the next phase of your life we hope that you will keep those wonderful Phi Chi Theta memories and lifelong friendships alive. We hope that you will consider joining a local alumni chapter or becoming an alumni-at-large. You can also join the growing ranks of alums that are keeping themselves "virtually" connected to the Phi Chi Theta community.



Visit our [web site](#) frequently and join the [Phi Chi Theta Alumni Facebook](#) group to keep up-to-date on current

events and connected with your global community of Phi Chi Theta sisters and brothers.



Congratulations on your achievements and best wishes to you in all of your future endeavors.

Honor Roll of Graduates – Class of 2009

Recently we contacted members of the Class of 2009 for our Honor Roll of Graduates. We asked them to go [online](#) and let us know about their post graduation plans. **Over 50% of the respondents** indicated that after some much deserved rest they have jobs lined up with a diverse group of international companies. It is good to see that even in these difficult economic times that our members are able to bring forward the skills, qualities and characteristics that make a business leader in order to secure jobs in their chosen profession. Some grads are continuing their education, a few are still looking for the right job and "enjoying life." In an effort to make a difference in the global community, a couple of grads have indicated that they will be spending time overseas doing support and assisting men, women, and children in developing countries.

We congratulate the Class of 2009 on your successful achievements and wish you all the best!



Mert Aydin (Upsilon) - B.B.A., Finance and Managerial Sciences. Will be doing an internship at Sea World.

Renée Bartley (Epsilon) - B.S., Accounting Major, Japanese Language and Literature Minor. I will be working in the Audit Division of the Pittsburgh office of Deloitte and Touche LLP.

Christine Camanzo (Alpha Iota) - B.S., Accounting, Minor in International Business. Starting with KPMG, LLP within the Financial Services Audit sector, in September in New York City.



Lauren Chuday
(Alpha Iota)

Lauren Chuday (Alpha Iota) - B.S., Supply Chain & Information Systems, Minor (BA) in Spanish Language. Joining Wal-Mart at their corporate headquarters in Bentonville, Arkansas as an employee in Electronics Replenishment.

Tracy Davis (Upsilon) - B.A., Economics. In the Fall, I will be enrolling in a Ph.D. program in Educational Policy with a concentration in Economics at Michigan State University.



Kathryn Delli-Colli (Delta Sigma) - B.B.A., Marketing: Business-to-Consumer Honors Scholar. I will be working in Arlington, Virginia for a global consulting firm named Sapient as Junior Assistant of Program Management. I will be assigned on various projects to help government agencies find business solutions.



Rebecca Dillon (Alpha Upsilon) - B.S., Actuarial Science-Business. I want to move to Portland, OR and get a job in the insurance industry. My short term goal is to get my associate risk management certification and my long term goal is to become a commercial lines underwriter at a reputable company.

Lee Dodek (Alpha Iota) - B.S., Accounting. Looking for work right now, enjoying life.

Matt Dunatchik (Epsilon Phi) - B.A., Supply Chain Management. Looking for a job in the Midwest area.

Amanda J. Gleason (Beta Theta) - B.B.A., Marketing. I have been actively looking for a job so that hopefully when I graduate in May I will have something lined up for me right away.

Kavita Gopalan (Alpha Mu) - B.S., B.A., Finance and Spanish. Will be working for the government in the Department of Health Care Finance.

Justin Grasso (Delta Sigma) - B.B.A., Major: Management, Concentration: Technology, Innovation, and Entrepreneurship. Will be joining General Services Administration as a Financial Management Specialist.



U.S. General Services Administration

Sara Griffin (Alpha Iota) - B.S., Marketing, Minor in psychology. No job secured yet, but traveling to Italy and France for two weeks post-graduation.



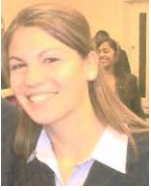
Stanley Hou (Zeta Beta) - B.B.A., Business Administration; Minor: Asian Languages and Cultures. Will be joining Diamond Management and Technology Consultants as an Analyst.

Bill Judge (Alpha Iota) - B.S., Marketing, Minor Legal Environment of Business. I plan to attend law school pursuing a specialization in Corporate Litigation or Mergers and Acquisitions.

Megan Kerr (Alpha Iota) - B.S., Major – Marketing, Minors - Economics, Sociology. I will be working for ZS Associates, a marketing and sales consulting firm and specializes in market research and consulting for pharmaceutical companies, in Center City Philadelphia.



Lauren Kessler (Epsilon) - B.B.A., General Management with concentrations in Human Resource Management and Organizational Behavior. Currently looking for a full-time position, preferably in the Human Resource area



Sarah Koman
(Alpha Mu)

Sarah Koman (Alpha Mu) - B.S., Accounting and Finance. Will be joining Ernst and Young as a Tax Associate in Baltimore, Maryland.



Varun Lal (Delta Sigma) – B.B.A, Finance. Applying for positions.

Seth Leibert (Zeta Beta) - B.B.A., Business - Concentration in Accounting. I will be attending a one year Masters in Accounting and then will be off to full time employment at PricewaterhouseCoopers.



Beers + Cutler **Ryan Levine (Alpha Mu)** - B.S., Accounting. Will be working in Washington DC Area at the accounting firm Beers and Cutler.

Lisa Lukasik (Delta Xi) - B.S., B.A., Logistics Management and Marketing. Looking for either a job or internship.

Kaitlyn Macy (Alpha Iota) - B.S., Accounting; Minor in the Legal Environment of Business. Looking for a job in the Accounting/Finance department of a large company located in Pittsburgh, PA.



Katie Manson (Alpha Upsilon) - B.S., Business Management and Administration. Hoping to get on board with a company or the federal government for a few years then attend graduate school for my M.B.A. at Millikin University.

Jamie Marshall (Alpha Iota) - B.S., Major: Supply Chain & Information Systems. Minors: International Business; Information Systems Management. Looking for a job in the Supply Chain field.

Brandon McArthur (Zeta Gamma) - B.S., Finance. Join Deloitte Consulting as a Business Technology Analyst.



Amanda Meyrick (Zeta Delta) - B.S., Business Administration; Concentration - Operations Production Management; Minor – Communications. I am currently looking for a job, most likely in the engineering realm. Possibly at an Engineering Construction firm or a pharmaceutical company.

Adriana Molina-Teran (Delta Sigma) – B.A., International Affairs. Plan to travel to Australia and do other traveling as well. Afterwards apply for jobs related to my major.



Nicholas Murphy
(Zeta Gamma)

Nicholas Murphy (Zeta Gamma) - B.S., Finance. Beginning late July 2009, I will start as a Business Technology Analyst (BTA) for Deloitte Consulting. I will be working out of the Chicago office and look forward to networking and interacting with PCT alumnus from the area.



Megan Myers
(Zeta Gamma))



Megan Myers (Zeta Gamma) - B.S., Marketing and Business Process Management. I will be doing product marketing for Fellowes.

Laura Norton (Alpha Iota) - B.S., Marketing. Either I would like to work in the field of Marketing particularly in the pharmaceutical sector, or I would like to go back to Graduate school and get a Masters in Higher Education/Counseling.

Kelly Palagruto (Alpha Iota) - B.S., Accounting. I will be working at Ernst & Young in the Philadelphia office.



Mary Peterson
(Delta Xi)

Mary Rebecca Peterson (Delta Xi) - B.S., Marketing. Will be working for Context MG, a marketing firm based out of Grand Rapids, MI.

Kayla M Polega (Delta Xi) - B.S., Logistics Management and Marketing. Depending on where I receive a job offer, I am going to work full-time as well as go to culinary school part-time. I will do this for two years then go back to school for my master's degree in supply chain management, hopefully at Michigan State University.



Christina Porcaro (Alpha Iota) - B.S., Marketing. Store Management Training Program with Kohl's Department Stores.



Stephanie Ralston
(Alpha Iota)

Stephanie Ralston (Alpha Iota) - B.S., Marketing, Minor in The Legal Environment of Business. Going to backpack across Europe for two weeks; Moving to Pittsburgh; Work for Dick's Sporting Goods Corporate as a Merchandise Trainee.



Jacqueline Recchia
(Epsilon Phi)

Jacqueline Recchia (Epsilon Phi) - B.A., Supply Chain Management. Working for True Value Company in Chicago as an Inventory Planner.



Nichole Reinbold (Delta Xi) - B.B.A., Finance and General Business Administration Minor: Legal Studies. I am currently looking for a job in Michigan.

Jordan Richmond (Delta Sigma) - B.B.A., Business Management, Minor: Computer Information Systems. Will be joining Freddie Mac as a Business Technology Associate in their Operations and Technology Division.



Andrea Skeels
(Delta Xi)

Andrea Skeels (Delta Xi) - B.S., Accounting. I have an internship immediately following graduation, for the summer of 2009. I am currently looking for a job in Nashville, TN which is where I will be moving after my internship is complete in Mount Pleasant.

Lauren Steinberg (Epsilon) - B.A., Communications and Sociology. Plan to go to graduate school (still undecided which one) for Higher Education and Student Affairs.

Hannah Tussey (Epsilon) - B.S., Accounting and Finance. I will be working for Deloitte and Touche in their Audit practice.



Lauren VanSloten (Delta Chi) - B.S., Business Management. Looking for a graduate assistantship to financially assist me in getting my MBA.

Saurabh Vasudeva (Alpha Mu) - B.S., International Business with Concentration in Finance. Travel, Work, and then Graduate School.

Jessica Viola (Alpha Mu) - B.S., Accounting. Will be working for PricewaterhouseCoopers in Manhattan.



Romel Voellm (Delta Sigma) - B.S., Kinesiology: Sports Management. Hoping to get into this management trainee program through the internship I am in now with MWR (Moral Welfare and Recreation).

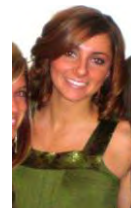
Wesley Wang (Alpha Mu) - B.A., Economics. Travel to Taiwan and begin working sometime in September.

Jennifer Watz (Delta Mu) - B.A., Economics, Certified Business Foundations (Business Administration Minor). I have applied to graduate school for a Master in Accounting and am waiting to hear back from the University of Texas at Austin and Southern Methodist University, where I will start in fall 2009.

Erin Webb (Upsilon) - B.B.A., Business Economics. Interested in joining a large Atlanta based company in a revenue/cost management division. Return to school within two years part-time to obtain a Masters Degree.



Summer Wejroch (Delta Xi) - B.S., General Business Management. I have been hired by Target Stores as an Executive Team Leader upon graduation. I will be working full time in a management position of a store near home.



Summer Wejroch
(Delta Xi)

Tiffany Woloshyn (Alpha Upsilon) - B.S., Psychology, minor in Business management with a concentration in human resources. I have been applying to jobs, but am currently still looking for a job. This summer, 2009, I will be traveling to South America and volunteering for Operation Smile.



Nicole Woods (Delta Xi) - B.A., Entrepreneurship. I plan on going to Culinary school at Grand Rapids Community College to further my career. I plan on opening a restaurant in the future so I would like to have extended education for that.

Brittany L Yansak (Delta Xi) - B.S., International Business, French minor. I have been nominated for and hope to be offered an invitation to serve as a Peace Corps Volunteer, working in Africa in Small Business Development. Following the 27 months of service, I hope to utilize gained insight and contacts to find work in the field of community and economic development.



Brittany Yansak
(Delta Xi)

Phi Chi Theta – The Opportunity of a Lifetime – To Last a Lifetime⁷



Being a Phi Chi Theta member is not a short term process; it has a lifetime guarantee -- very rare in our current economic climate. That is a pretty good bargain. Let's explain. You may think of Phi

Chi Theta as being one of your networking connections for the time you are in college; but is and can be so much more. Consider the following examples:

- You want an internship or position with a specific company that is headquartered in another city;
- You have that great new job and are moving to a new city where you know no one;
- You are responsible for planning a corporate function and need to be able to impress your boss with you knowledge of the best restaurants, hotels, etc.

All of these scenarios could be easily resolved by an on-going relationship past your college years with other Phi Chi Thetas. I have been a member of Phi Chi Theta for 40+ years and have known collegiates or recent graduates to reach out to resolve "all of the above" issues, utilizing contacts with other members whether they knew them personally or not during their collegiate years. They were simply Phi Chi's, reaching out to unknown Phi Chi's to help them.

What has Phi Chi Theta meant to me over the years? We advised each other regarding how to get through difficult courses when we were collegiates; as an alumni group we continued professional meetings which were of benefit to our members; socially we developed relationships which helped us to expand our knowledge of other career areas and volunteer opportunities; Phi Chi Theta is and can be a continuing, positive relationship in your life.

I was a member of Delta Chapter, Northwestern University. We were an evening division chapter, and all of us worked full time jobs while going to school in the evening divisions. We share a variety of experiences ranging from marriages to births to deaths together -- some happy times, some sad. But we all got through those circumstances because we knew we had each other as "back up."

Phi Chi Theta has been my partner through the highs and lows of my adult life; school, job situations, marriage and the death of my husband. An example of the friendships and connections that last a lifetime, is the relationship over the years with Irene M. Meyer (Delta). She

encouraged me during those busy years of evening classes at Northwestern University. We shared with others many Phi Chi Theta summer outings at member



Louise Aldridge's Beverly Shores summer home; Irene was the soloist at my wedding and we gave each other emotional support at the times when our respective husbands died. This truly represents the expression, **"Once a Phi Chi Theta, Always a Phi Chi Theta."**

It is not often you can have a continuing relationship like that over the years, especially with our current society where people frequently change jobs, move, or go on to new career opportunities. You'll never know when you might need the friendly voice of another PCT -- don't discount how important your PCT membership can be to you in the future.

Fran Spencer (Delta) has been an active member of Phi Chi Theta for over 40 years, and is Secretary of the Phi Chi Theta Educational Foundation. She lives in Chicago, IL and works as an independent retail consultant. She can be reached at FranSpencer39@gmail.com

Where Are They Now?

Mary Ellen Lewis, Scholarship Chair recently caught up with three of the past scholarship recipients to find out where they are at today in their studies, careers and future planning. In their own words, here is where they are now.

Elise Kidd (Zeta Gamma)

2007 Naomi L. Satterfield Memorial Scholarship



Greetings (from somewhere in the world) fellow Phi Chi Thetas! I've successfully completed over six months working for Deloitte Consulting. After a whirlwind six weeks of world-class training, I started my first SAP

project working with a Fortune 100 mining and construction equipment company to develop and integrate the newest Extended Warehouse Management module of SAP.

I've been blessed that I went into my career very open minded and willing to let "nature" take its course. It is hard to have exact expectations and have all of them happen. The economy has definitely been a damper, but I've been weathering the storm well. I may not have had an array of projects to choose from like one may in better times, but it has allowed me to focus in on specific areas to gain expertise and also to continue strengthening my network. There, of course, have been scary moments watching the market re-align their headcounts and seeing large corporations and banks collapse. With the economic situation having been one of the biggest worries and stressors for me, I suggest not looking at the 401K to see how much money you've lost and to focus on strengthening your skills to come out better on the other side.

Despite it all, my career has well exceeded my in initial expectations. I've been given exposure to some of the best training in the industry including

certification directly from SAP. I've also been given the opportunity to work with some of



the best and brightest software developers and information technologists on some of the most difficult supply chain and logistics problems in the world. I can't truthfully say that I expected to be exposed to such a broad spectrum of people and knowledge even in the first ten years of my career, let alone the first six months! And to top it all off, I have the greatest peers around!

In the next year I see myself taking my knowledge to the next level and the next client gaining experience as I go! I'll soon be putting a more global perspective on things...so keep in touch to see what's next!

Elise Kidd (Zeta Gamma) is a Life Member of Phi Chi Theta. When Elise isn't traveling around the globe for Deloitte she lives in Lake Forest, IL. She can be reached at elise.kidd@gmail.com

Andrew Noh (Zeta Beta)

2007 Anna E. Hall Memorial Scholarship



When I first received a scholarship from the Phi Chi Theta Educational Foundation, I wrote that it was a sum result of the "patience, time and selfless

encouragement" that my brothers and sisters had invested in me. This past semester, I finished up my BBA degree at the Stephen M. Ross School of Business at the University of Michigan. Now I have the fortunate pleasure of having several months free before I start work with Bain & Company later in the year. With this free time on my hands, I have the opportunity to "pay it forward" to the younger members of my campus chapter. I hope will have similar and even better experiences than I had.

There is such a great importance to making sure I leave behind a legacy, not out of self-conceit, but out of a desire to pass on the things that people have given me. Obviously, it is of no use for me to go to the numerous upperclassmen that have long graduated and been in the workforce. If anything, I will still be taking cues and advice from them for years to come. Instead, the only way to uphold their legacy is to continue to help others the same way I have been guided.

In doing so, I feel I have learned the number one means to paying it forward is to simply be available to people: your brothers and sisters.

As students, we find ourselves so much busier than we think we ought to be. After all, with just classes and a few



Clare Abdalla (Alpha Iota)

*2007 Trustees' Scholarship
in Memory of Irene M. Meyer*

I am currently on a U.S. Fulbright grant as an English Teaching Assistant in Malaysia. I am stationed in a small fishing village in the strongly conservative and Islamic state of Terengganu.



The cultural challenges are innumerable as I constantly navigate through school and state hierarchical systems and bureaucracies. I teach about 800 adorable Malay secondary students, ages 13-17, on a weekly basis, focusing on confidence in communication. Additionally, I have the opportunity to travel throughout South East Asia on weekends and school holidays. I just got back from trekking through the Borneo rainforest in search of orangutans!

I'm finding that the Finance degree I received from Penn State has not played a vital role in my current activities (though I'm hoping it will when I

extracurricular activities to tend to, we should have a lot of time to relax and help people. Yet, it turns out it is a much more conscientious effort. Factor in lunches and coffees with friends and mentors, a busy recruiting season, part-time jobs, our faith if we hold one and we find ourselves with a gamut of things that quickly consume our time. Again, it has to be a very intentional effort to pay it forward, but with the opportunities that PCT has given me both through this scholarship and social and professional community alike, I am hopeful that I can continue the legacy of those members before me.

Andrew Noh (Zeta Beta) has just completed his B.B.A., in Strategy and Finance and is looking forward to continuing his involvement and as an alum of Phi Chi Theta. Andrew lives in Chicago, IL and can be reached at atnoh@umich.edu

return home for a job in August!). Instead, skills I learned through Phi Chi Theta during activities such as interview practice or organizing philanthropic events and participating in business ethics courses, are my survival toolkit. The confidence and ability Phi Chi Theta instills in its members helped tremendously during my school years and continues to guide me.

I've come to realize that Phi Chi Theta isn't just about business—the skills the fraternity taught me are transferable to all aspects of life (even when you're living in the middle of the Malaysian jungle!)



Clare Abdalla with a couple of her students at a sporting event in February

Clare Abdalla (Alpha Iota) is an English Teaching Assistant in the Terengganu Province of Malaysia. Even though she has limited Internet access, she can be reached clare.abdalla@gmail.com

Taking it One Step at a Time



I woke up this morning and realized that I have been out of school (James Madison University) and in the workplace

for almost 20 years. In this time, I have grown and developed as a seasoned IT professional, continue to support outstanding client-delivery team's in developing and implementing innovative solutions that meet our client's mission focused needs, and I have developed and continue to leverage a global and virtual network of business professionals. It isn't something that just happens over night, or is just handed to you on a silver platter. It takes time, commitment, and a willingness to take it one step at a time.

As you begin the next stage of your professional development, I'd like to share some words of advice that will help you succeed as you move forward:

- **Don't be afraid to try new things**
- **Listen and learn**
- **Play by the rules**
- **Build and leverage your network**
- **Seek out good mentors**

Innovation and ingenuity are two key factors that set businesses apart in the marketplace.

Businesses are only as successful as the contribution and impact of its individual employees. It is its people and their ability to keep in front of and transform to changing market demands that makes a business



successful. With fresh minds come fresh ideas. Don't be afraid to speak up and share your ideas or propose an alternate to the status quo.

But also be willing to listen...While trying new things may be cool and cutting edge, it is just as important to learn from the past. You will be working in a diverse environment where you can learn from, leverage, and respect the

differences of each player on the team in order to grow and develop into a successful business professional.



You learned early on in your life to play by the rules, and that cheaters never win. At a time when boardroom decisions and business ethics are being called into question, it is more important than ever to remember this simple golden rule.

When you joined Phi Chi Theta, you joined a global network of individuals that share a common ideal. By participating in local,



regional, and national events you continued to build, extend, and leverage this

network. As you move forward, you will be adding new dimensions to your global network. Being able to effectively reach-back into your network and leverage the expertise of the collective will help you succeed and grow as a business professional.

Finally, seek out mentors and role models that can help you grow into a successful business professional. Find people in your network that you trust



and respect. Throughout your career, you will have more than one mentor that can help you focus, realign, and fine tune your skills and expectations. Listen and learn from their advice. Because one day, you too may be sought out as a mentor.

Greg Holden (Delta Sigma) is a Life Member of Phi Chi Theta, and President of the Phi Chi Theta Educational Foundation. He lives in Vienna, VA and works at Booz Allen Hamilton. Greg can be reached at greg.s.holden@gmail.com



In our new segment, Mary Ellen Lewis, Chair of the Scholarship Committee caught up with Katie Griffin (Beta Nu) at the Central

Regional Conference in January. As an active alum, working mother, and 2008 recipient of the Anna E. Hall Memorial Scholarship, we asked Katie to share some insight into how she is able to strike the right balance between work, family, graduate school, and Phi Chi Theta.

Mary Ellen: How are you using your Business Administration degree today in your present job?

Katie: I have a Bachelor of Business Administration with a double minor in Strategic Management and Accounting. I am also attending graduate school to receive a Masters of Public Administration with a specialization in Public Finance. I am a Financial Analyst/Budget Officer for the City of Denton. In my career, I use both my private sector accounting degree along with my education in public management and finance to address the needs and concerns for the financial operation of the City of Denton.



Mary Ellen: What led you to believe that you wanted to go to graduate school?

Katie: I knew that if I did not attend graduate school I was going to stall out in my career. Graduate school will give me the letters behind my name to open doors and provide opportunities that a BBA and experience along cannot provide.

Mary Ellen: Are you still working full time or did you have to cut back hours at work in order to attend graduate school.

Katie: I am working full time while attending graduate school. I also worked full time while receiving my BBA.

Mary Ellen: What are you studying in graduate school and is it related to your present job?

Katie: In the MPA program at the University of North Texas, I am studying government finance and management. Because our economy is very volatile at this time, in my graduate classes



we are studying ways to forecast the financial futures of municipalities. I am able to take these techniques from the classroom to my office and help to study trends and analyze the current financial position of my city.

Mary Ellen: How do you juggle being a wife and mother of two?

Katie: Very carefully. Being a wife and mother are the two most important aspects of my life. I have an excellent husband whom is very

supportive of my education and career. I've learned to stay up late and go with very little sleep. You'll also find me on the side lines during my kids'



Katie, Karlie, and Eric Griffin on Showshoe Mountain

sport practices with a book or laptop working on projects. I do my best to never miss out on important events in all of their lives.

Mary Ellen: What does being a Phi Chi Theta member mean to you?

Katie: I value my membership in Phi Chi Theta. Being a member of PCT is being a member of a very important group of people. Some of my best friends are in PCT. Because of the friendships and support of Phi Chi Theta, I've been able to grow as a person and as a professional. I treasure the ability to share my personal growth with others in PCT. **"Once a Phi Chi Theta, Always a Phi Chi Theta"** is one of my favorite sayings.

Mary Ellen: In addition to your busy life, you have served as President of a very active Dallas Alumni Chapter? How do you do it?

Katie: A couple years ago I saw a need for a strong leader in the President role of the Dallas Alumni Chapter. At the time I was so busy with my children that I wanted to take a backseat to the chapter. But, I saw the chapter facing

serious growing pains and I was afraid that if I did not step up that the chapter may end up like several other alumni chapters, inactive. So...I decided that I would step up and run for



Katie receiving the Anna E. Hall Scholarship in Memphis

office, one of the best decisions I ever made. I have been president of the Dallas Alumni Chapter for just over a year now, I was re-elected last month. PCT is a priority in my life, both locally and nationally. I set aside specific times to work on projects for PCT as well as send out semi-monthly emails to our chapter.

Mary Ellen: Do you have time for fun and social activities with your friends and family?

Katie: Because I have such a hectic lifestyle, my time with friends and family is somewhat limited, but special. I only study on Sundays, leaving Saturday available for family and friends. I try to meet a friend for lunch at least once a week. If there is an outing that I want to attend with family and friends, I try to work ahead for work, school, and other projects so that I'm fully focused on that activity when it is taking place.

Mary Ellen: Realizing that you might not have time now, but if you did, what type of books would you be reading, what movies would you be going to, and what kind of food is your favorite when you eat out?

Katie: I love to read romantic mysteries, when I have time which is usually only during Christmas break. As for the movies, I love romantic comedies and action movies. Once a semester, the Dallas Alumni Chapter has a movie night; this is generally my movie for the semester. As for eating out, I love food. Of course, I'm married to a



chef, so that makes it much more entertaining. I love food with flavor and flair. My favorite restaurants are P.F. Changs and Pappadeaux.



Mary Ellen: What are your future plans to remain involved in Phi Chi Theta and make an impact?

Katie: I want to continue to serve as the Dallas Alumni Chapter president for the next couple of years with the goal of growing membership and developing a new group of officers. Once I complete my graduate degree and my life begins to settle down, I'd like to explore the possibilities the National Office of Phi Chi Theta has to offer.

Katie Griffin (Beta Nu) is a Life Member of Phi Chi Theta. When she's not working, in school, tending to her family, or helping on a special PCT project she can be reached at ktegriffin@embarqmail.com

All of your scholarship resources are available online at
<http://www.phichitheta.org/foundation/scholarship/>

Applications are due May 1 and should be e-mailed to:
PCTEdScholarship@aol.com



When you decided to become a member of Phi Chi Theta Fraternity, you realized that you would be receiving many benefits to complement your school life. You were exposed to professional speakers,

networking opportunities, leadership and organizational skills, friendship and a myriad of other benefits. The Phi Chi Theta Educational Foundation would like to add one more benefit to that collegiate experience -- the ability to apply for scholarships that are awarded annually through the Phi Chi Theta Educational Foundation and the Fraternity.

Did you know that if you are attending graduate school, to further your business education and training, and are a Phi Chi Theta member in good standing that you are eligible to apply for the scholarships? It's true, look at Katie Griffin (Beta Nu). She is pursuing a Master's degree at the University North Texas. Some of you may be going directly on to graduate school, or you may decide to wait a few years and get some

real-world experience behind you. Regardless, as an active alumni member, either in a chapter, or as an alumni-at-large, you are eligible to apply for scholarships that are offered by the Phi Chi Theta Educational Foundation.

We hope that you will continue your affiliation with Phi Chi Theta after graduation so that you can continue to take advantage of the educational programs and scholastic recognition afforded to all members of Phi Chi Theta since 1924.

For more information about the scholarship program and to download your application, please visit our [web site](#) or contact us at PCTEdScholarship@aol.com. The deadline to apply is May 1.

Congratulations on your graduation, and best wishes in all of your future endeavors.

Mary Ellen Lewis (Colorado Alpha) is a Life Member of Phi Chi Theta. She is Treasurer and Scholarship Chair for the Phi Chi Theta Educational Foundation and also serves as the Phi Chi Theta National VP of Expansion. She can be reached at PCTEdScholarship@aol.com

Business Etiquette Tip of the Month

Ann Marie Sabath, Founder of At Ease Inc. and National Honorary Member



The next time you prepare to send an e-mail message, take a few minutes to establish rapport with the person who will be receiving it. You can do this through a personal comment in the first or second

sentence before getting down to business (i.e., "Hope you had a good weekend, George," "Thanks for your quick response, Mary."). Also, when ending a message, humanize it with a friendly phrase like "Looking forward to seeing you next week" or "I'll be in my office today until 6:00 p.m. if you'd like to visit by phone."

By humanizing your message, recipients will know you are interacting with them as people first and then as clients/employees. Most importantly, they will look forward to hearing from you.

Reprinted courtesy of Ann Marie Sabath, Founder of At Ease, Inc a business etiquette and protocol firm established in 1987, and National Honorary Member of Phi Chi Theta. She is author of One Minute Manners: Quick Solutions to the Most Awkward Situations You'll Ever Face at Work. Ms. Sabath can be reached at sabath@ateaseinc.com

**Graduating? Go online - <http://members.phichitheta.org/node/22>
and tell us about your Post Graduation Plans!**

Celebrating 85 Years of Excellence



In August, the Phi Chi Theta Educational Foundation launched the "\$85 for 85 Years" campaign as a challenge to all Chapters, members, and alums to show off their PCT pride and celebrate this historic milestone. To-date, we have **received over \$850, and are over 65%** of the way to reaching our goal of raising **\$1,300 by July 31, 2009**.

Special thanks to the following Chapters and Individuals that have generously contributed to the "\$85 for 85 Years" campaign:

Epsilon Chapter - University of Pittsburgh
 Alpha Mu Chapter - University of Michigan
 Beta Theta Chapter - Sam Houston State University
 Gamma Tau Chapter - University of Montevallo
 Delta Xi - Central Michigan University

Denver Alumni Chapter
 Martin Alumni Chapter
 New York Alumni Chapter
 Washington DC Alumni Chapter

Individual Donors: Judy Chavez, Elizabeth Clawson, Mary Ellen Lewis, Silvia Picon

Show off your PCT pride! There is still time to help us reach our goal of raising \$1,300 by July 31. Sponsor a fundraiser, or make an online today to support the educational and scholastic programs that the Foundation offers to its members and future business leaders. Visit our [web site](#) and select the link for Donate Now Using Just Give.org.



eEdNews Feedback Survey

How are we doing? Your opinion matters and we want to hear your feedback about [eEdNews](#).



Are we providing you with timely, relevant, and quality information about the Foundation, its

programs, and people? Are there other articles and information that you would like to see more or less of in the newsletter?

We invite you to go online:

<http://members.phichitheta.org/node/35>

and take our short survey. All responses are anonymous, and the survey should take less than five minutes to complete.

We appreciate your feedback!



Volunteers Wanted!

Time is a precious commodity that we all value and sometimes wish that we had more of in a day. The Foundation is looking for volunteers that can give an hour or two a month to help on special projects. Projects that include:

- **Scholarship outreach**
- **Writing an article** for [eEdNews](#) or [The IRIS](#)
- **Contacting (phone or email)** members, alums, business partners
- **Promoting the Foundation** and its programs on LinkedIn, Facebook, etc
- **Supporting an outreach mailing**
- **Developing slicks, flyers, brochures**

A precious hour or two will greatly assist us!

Please [contact us](#) at FoundationInfo@phichitheta.org for more information, or to volunteer your time.

**Looking for a new way to search the Web and support the Foundation?
 Go online to Phi Chi Theta's Web Search - <http://home.phichitheta.org/>**



Phi Chi Theta Educational Foundation Donation Form

Name: _____

Address: _____

City: _____ State/Zip/Postal
Country: _____ Code: _____

Phone: _____ E-mail: _____

Chapter: _____ Employer/
Job Title: _____

I want to make a tax-deductible contribution of: \$25 \$50 \$100 \$250

\$500 \$1,000 Other: \$ _____ Yes, my company has a matching program.
I will apply for the matching grant.

Enclosed is my check in the amount of: \$ _____

I wish to pay the remaining balance in 4, 6, or 12 easy installments of: \$ _____

Please use my gift for the following purposes (select one or more):

\$ _____ Naomi L. Satterfield Memorial Scholarship

\$ _____ Irene M. Meyer Memorial Scholarship

\$ _____ Trustees' Scholarship

\$ _____ Anna E. Hall/Helen D. Snow Memorial Scholarship

\$ _____ Educational Programs

\$ _____ General Fund

\$ _____ Please use it where the need is greatest

Please make check payable and send to:
Phi Chi Theta Educational Foundation
1508 East Beltline Road, Suite 104
Carrollton, TX 75006

THANK YOU!

Help us "Go Green!"

Make your donation online and securely through
Justgive.org or Network for Good. Visit our web
site at [http://www.phichitheta.org/foundation/
foundation.htm](http://www.phichitheta.org/foundation/foundation.htm) to make your online donation.

THANK YOU!