



# Phi Chi Theta Educational Foundation

October 13, 2010

## President's Message "Taking it to the Next Level"

### Welcome back!

Hope your summer was enjoyable and that you have returned to school and work with a renewed sense of commitment and an awareness of the immense value and pride that each and everyone one of us gets from being a brother or sister of Phi Chi Theta.

For over 10 years, the Foundation has taken pride in its commitment to awarding scholarships and providing quality educational programming to Phi Chi Theta and its members. This commitment was evident this summer in Orlando, FL at the National Chapter Meeting. The Foundation was an integral part of that experience by awarding \$4,500 worth of scholarships, sponsoring dynamic and inspiring speakers, and raising over \$2,000 through the Auction/Raffle and generous donations. In this issue of eEdNews, you can read more about each of the 2010 scholarship recipients and our successful outreach programs at the National Meeting.

As the Foundation begins its second decade, we have committed ourselves to taking the scholastic and educational programs to the next level by **applying new ideas, building new relationships**, and **extending the reach** of our programming.

**Applying New Ideas:** Being able to leverage fresh ideas with enthusiastic individuals is key to transformational change in any organization. This summer, we welcomed two new Board members to the Foundation – **Andrew Noh (Zeta Beta, 2008)** and **Peter Miller (Gamma Iota, Advisor)**. Through their involvement in PCT at the local level, they will help to bring fresh perspectives to our programs and provide the thought leadership needed to evolve our programs to the next level. Over the next 24 months we'll be continuing to recruit new Board members and apply their fresh ideas to develop and refine our programs.

**Building New Relationships:** In an effort to build new relationships and provide greater opportunities for members to participate in educational and professional programming at their local Chapter level

the Foundation has recently launched the **"50-50 Calling Campaign."** An outreach program that connects Chapters with their alums in order to raise money that can be used for sponsoring professional events, speakers, professional trips, or attending conferences/meetings. **50% of everything a chapter raises will go back to the chapter!**

This fall, when you get a call from your alma mater chapter, I hope that you enjoy catching up with them and that you will make a donation to support the educational and professional programming that your alma mater chapter provides to its members. Want to learn more about this program? Email us at [2010CallingCampaign@phichitheta.org](mailto:2010CallingCampaign@phichitheta.org).

**Extending our Reach:** The Foundation remains committed to providing quality programs; including sponsoring educational programming at the 2011 Regional Conferences and awarding \$2,500 next summer in scholarships. We're also beginning to pursue longer term programs where we can extend the educational and professional value of your collegiate and alumni experience. We are in the early stages of piloting PCT eLearning, an online training curriculum that will be available to each Chapter, and shaping the framework for a new Professional Certification Program which will award scholarships to alumni who are seeking professional certifications or continuing education credits in their respective field. Look for more information about both of these programs in future issues of eEdNews.

**We want to hear from you!** Have an idea or suggestion for an innovative program? Want to join the conversation? Email us at [FoundationPrez@phichitheta.org](mailto:FoundationPrez@phichitheta.org) to share your concept and ideas for programs that will add-value to the PCT experience.

### Inside this issue:

Foundation Luncheon	2
Scholarship Report	2
Todd Scheff	4
Alex Nestorov	4
Cristina Talucci	4
Lacey Barnickel	5
Sara Mitchell	5
Barbara Menico	5
Andrew Noh	6

We're excited about where we've been, and we're even more excited about where we are headed. I encourage you to do your part to help increase the opportunities for all members to participate in educational and professional programming. Reaffirm your commitment to higher business education and training by applying for one of the scholarships, supporting your chapter in the "50/50 Calling Campaign," making a tax-deductible donation, or volunteering your time.

Greg Holden, President  
Phi Chi Theta Educational  
Foundation

## 2010 Foundation Luncheon in Orlando



A great speaker, good food, the company of other Phi Chi Theta members, scholarships.....all were part of the Phi Chi Theta Educational Foundation luncheon at the biennial meeting in Orlando.

Peter Miller, author of “Unstoppable Attitude” and the advisor for Gamma Iota Chapter in Denver gave a very strong, motivational speech about his various career and personal challenges, including his participating in the Iron Man competition. His speech was very thought provoking and motivational.

Mary Ellen Lewis, past National President, Chairman of the Scholarship Committee, a Foundation Trustee and Treasurer and VP of Expansion, gave a brief history of the scholarship program and presented the Naomi Satterfield Scholarship (scholarship winners are noted elsewhere in this newsletter). Fran Spencer, President of the Chicago Alumni Chapter and Foundation Trustee, presented the Irene Meyer Memorial Scholarship and made a few personal remarks regarding Irene, as they were close friends. The Trustees’ Scholarship was presented by Whitney Davison, one of the recently appointed Trustees assisted by Sandra Finley, in whose honor the Trustees’ Scholarship was named and awarded in 2010.



## 2010 SCHOLARSHIP AWARDS Mary Ellen Lewis, Scholarship Chair

Dr. Danity Little, Past National President and Foundation Trustee, presented the Lester Richardson Scholarship, named for her father and presented in his memory. This was a special year for this scholarship presentation, as Lester’s widow, Ester Richardson, was present for the first time at the luncheon. She totally enjoyed meeting with all of the collegiate members and seeing her late husband honored. Ester is 94 years “young,” and certainly does not look her age.

The last two scholarship presentations – the Anna E. Hall and Helen D. Snow Scholarships, were presented by previous Foundation scholarship winners – Kathleen Griffin from Dallas Alumni and Elise Kidd, alumni-at-large, who has twice been awarded a Foundation scholarship. The Foundation is a living, breathing part of Phi Chi Theta “life.” Its sole purpose is to provide scholarships and funds to further professional activities within the chapters of Phi Chi Theta. As the end of the year progresses, please remember the Phi Chi Theta Educational Foundation in your year-end donations; funds contributed to the Foundation are tax deductible.

All funds received go to awarding scholarships or providing educational activities for the chapters.

Once a Phi  
Chi Theta,  
Always a  
Phi Chi  
Theta!

It is so rewarding to serve on the Scholarship Committee for the Phi Chi Theta Educational Foundation and the Phi Chi Theta Fraternity. The committee members for this year were appointed by Gary Hodge, President of the Fraternity and Greg Holden, President of the Foundation. Very special thanks to:

**Lindsay Barnes**, Beta Chapter, New York University, Empresa Solutions, LLC, manages contract work with private companies seeking Federal Government funding –Eastern Regional District.

**Mary Ellen Lewis**, Colorado Alpha, University of Denver, Denver Alumni Chapter, Retired from the University of Colorado Denver, College of Business, and Volunteer with Denver Hospice – Western Regional District.

**Danity Little**, Alpha Mu, University of Maryland, Organizational Consultant – Alumni at Large

**Bo Lockwood**, Gamma Iota, Denver Alumni Chapter, University of Phoenix – Western Regional District.

**Amanda Meyrick**, Zeta Delta, Drexel University, Estimator/Planner for Merck and Company Pharmaceuticals – Eastern Regional District.

**Andrew Noh**, Zeta Beta, University of Michigan, Associate Consultant, Bain and Company in Chicago – Central Regional District.

**Bill Schutte**, Epsilon Gamma, Western Michigan University, Citrix Systems (cloud computing industry), Supply Chain Management Department – Central Regional District.

The Phi Chi Theta Scholarship Program recognizes members, who exemplify the qualities of leadership, scholastic achievement and commitment to Phi Chi Theta. The scholarships are awarded to Phi Chi theta members in good standing who are pursuing a degree in business or economics.

This year the following six members were awarded the 2010 scholarships, announced at the Phi Chi Theta’s annual meeting:

**Naomi L. Satterfield Memorial Scholarship - \$1,000.** Todd S Scheff, Zeta Beta Chapter, The University of Michigan. Todd is pursuing a Bachelor of Science Degree in Finance (Minor in Economics and Chinese Language). He has been a member since

December 2009, and will graduate in May 2012. Here is a quote from his essay: "From holding professional workshops to having caring brothers and sisters, PCT embodies a commitment to develop each member for what lies ahead in the business world. Phi Chi Theta gives each member the preparation necessary to become successful individuals in the paths we choose."



Todd receives the Naomi L. Satterfield Memorial Scholarship!

**Irene M. Meyer Memorial Scholarship – \$1,000.** Alexander (Alex) Nestorov, Zeta Beta Chapter, The University of Michigan. Alex is pursuing a Bachelor of Business Administration degree in Business and a Bachelor of Arts Degree in International Economic Relations. He has been a member since April 2009, and will graduate in May 2012. Here is a quote from his essay: "I am indebted to this fantastic fraternity. Joining Phi Chi Theta has been the best decision I have made in my college career thus far. As I look forward to becoming more and more involved with the fraternity, I hope to continue learning from our brothers and sisters."

**Trustees' Scholarship, in honor of Sandra Finley, Executive Director of Phi Chi Theta – \$1,000.** Cristina Talucci, Zeta Eta Chapter, Indiana University Bloomington. Cristina is pursuing a Bachelor of Science Degree in Business Entrepreneurship, Management. She has been a member since December 2009, and will graduate in Spring 2012. Here is a quote from her essay: "My learning experience through Phi Chi theta has been incredible, and I plan to take my new knowledge into my professional career. Working with such a great,

dedicated group of individuals, I will continue to uphold high standards for all my endeavors."



Cristina receives Trustees' Scholarship, in honor of Sandra Finley, Executive Director of Phi Chi Theta!

**Lester F. Richardson Memorial Scholarship – \$500.** Lacey D. Barnickel, Alpha Mu Chapter, University of Maryland. Lacey is pursuing a Bachelor of Science Degree in Marketing. She has been a member since May 2009 and will graduate in May 2012. Here is a quote from her essay: "The leadership skills I have learned from Phi Chi Theta will be of tremendous use. I will be making the majority of decisions as I lead my company from the ground up, but I will also need to share my vision with others who can help me achieve my goals. I have already been exposed to leadership roles through Phi Chi theta and it would be foolish to not take advantage of that knowledge."

**Anna E. Hall Memorial Scholarship – \$500.** Sara Mitchell, Beta Chi Chapter, The University of Tennessee at Martin. Sara graduated with a Bachelor of Science Degree in Accounting in May 2010 and is now pursuing a Master's Degree in Business Administration. She has been a member since April 2008, and will graduate in May 2012. Here is a quote from her essay: "I plan to apply the

*"I do solemnly promise to be true and loyal to the ideals of Phi Chi Theta..."*

influence that Phi Chi Theta has had on my development into my future career and professional aspirations by using the knowledge, confidence and friendship acquired to excel in the field of business."



Sara Mitchell receives the Anna E. Hall Memorial Scholarship!

**Helen D. Snow Memorial Scholarship – \$500.** Barbara Menico, Zeta Delta Chapter, Drexel University. Barbara is pursuing a Bachelor of Science Degree in Business Administration with a concentration in Marketing and Entrepreneurship. She has been a member since August 2008, and will graduate June 2011. Here is a quote from her essay: "Phi Chi Theta has become more than a line item on my resume. The organization, through its ideas and members, has provided me with unique qualities that I will take with me through my entire life. Phi Chi Theta has helped to mold me into the successful young business professional I am today."

It is not too early to think about the **2011 Phi Chi Theta Scholarship Program**. The Foundation and Fraternity will be awarding four scholarships in 2011. The application is now available on the Foundation's web site: [Foundationinfo@phichitheta.org](mailto:Foundationinfo@phichitheta.org). The application due date is May 1, 2011. However, do not wait until the last minute. Start preparing your application in March. Send your application via e-mail to: [PCTEdScholarship@aol.com](mailto:PCTEdScholarship@aol.com)

Here is something new for this year. When your chapter supports the **2010, 50/50 telethon**, 50% of the donations you receive will be returned to your chapter in the form of a grant to be used for educational purposes. This campaign is reaching out to your alumni base and connecting them back to Phi Chi Theta and its programs.





## 2010 Naomi Satterfield Memorial Scholarship Todd Scheff

My name is Todd Scheff, and I am a junior at the University of Michigan, studying Business, Economics, and Mandarin. I currently serve as the Vice President of External Affairs for the Zeta Beta chapter. I was honored to be awarded the Naomi Satterfield Memorial Scholarship in August at the National Meeting. I am touched that the scholarship committee believes I exemplify the leadership and dedication of the past national president whom this award is named after. Not only has this scholarship helped offset the cost of tuition, but it has further encouraged me

to remain dedicated to my fraternity on a local and national level.

As far as advice to the brothers and sisters, the main thing is that you have to make sure you apply! The Foundation gives out many scholarships each year, but you need to plan ahead to apply. Be sure to get your recommendations done early, as the end of the school year is a busy time for professors and for us. Also be sure to stay dedicated within the chapter. The more you put into it, the more you will get out of it. Taking the time to apply is definitely worth it in the end!



## 2010 Irene M. Meyer Memorial Scholarship Alex Nestorov

My name is Alex Nestorov, and I am a double-major in Business and International Economic Relations. I am both honored and extremely thankful to be receiving the Irene M. Meyer Memorial Scholarship. Irene was such an active member of PCT, and I hope to follow in her footsteps. As community service chair my first semester, and the newly created Event Consultant last semester, I know that PCT has been an integral part of my college career, and will continue to be so. I am very proud of being chosen for this scholarship, and vow to work even harder to ensure the success of PCT at Michigan and around the country.

My advice for future applicants is not to leave it to the last minute. The Foundation is very generous with the time they give you to complete the application. Hopefully, PCT chapters should let their members know about the scholarship at the beginning of the year, which gives you a lot of time to complete it. Finally, take advantage of the opportunity, and get involved in PCT! We all work so hard during our pledge semesters that it isn't worth it to just throw PCT away and forget about it. This is a great organization that gives you so much, take advantage of it and give back to PCT in the future!



## 2010 Trustees' Scholarship in Honor of Sandra Finley Cristina Talucci

I am honored to be the recipient of the 2010 Trustees' Scholarship in Honor of Sandra Finley. Sandra works endlessly for the benefit of everyone in the fraternity and as the Founding Secretary of the Zeta Eta chapter, I aspire to do the same good for my chapter. I first joined a group of international students in April 2009 who wanted to start a new professional business fraternity. Months of hard work later, we had a chapter of 20 actives, and I had the opportunity to apply for the Educational Foundation's scholarships.

Receiving a scholarship from the Phi Chi Theta Educational Foundation means a lot to me as a member of a new chapter. Both the chapter and I now have a stronger connection to the fraternity as a whole. The recognition I received from my hard work as Founding Secretary is humbling and appreciated. My appreciation extends to the rest of my chapter who without their dedication, I could not

have received such an honor. I am excited to say that this scholarship will help me study abroad next summer and will inspire the other members of my chapter to be involved in Phi Chi Theta and apply for future scholarship opportunities.

There are a few words of recommendation that I would like to extend to other Phi Chi Theta actives. First, follow the Phi Chi Theta creed and work always for Phi Chi Theta's best interests. I have always sought to do all I can to ensure the success of my chapter and everything my chapter does. The Educational Foundation recognizes this dedication. The second piece of advice that I would like to communicate is the importance of keeping track of your accomplishments. Whether it is writing your resume, speaking in an interview, or applying for a scholarship, having a list of your accomplishments will help tremendously.

---

## 2010 Lester F. Richardson Memorial Scholarship Lacey Barnickel

My name is Lacey Barnickel and I am currently a junior at the University of Maryland, double majoring in Marketing and Supply Chain Management. I joined Phi Chi Theta my spring semester of my freshman year with the goal to learn and experience more about the business world beyond the classroom. Not surprisingly, Phi Chi Theta brought me more than I could imagine and I am continually learning and developing as a woman in the business world.

Upon receiving the Lester F. Richardson Memorial Scholarship, I was immediately gratified. I instantly felt that the effort I had put into earning my GPA, writing the application essay, and doing everything else that had led me to this point had paid off. It was definitive proof of the value of commitment; once I had

committed myself to earning the scholarship, I made it a goal of mine to reach. In doing so, I feel that the scholarship has come to represent the value of hard work. Winning this scholarship also shows that a high level of work will not go unrecognized. In this instance, the money I received will go directly towards my business education.

I encourage other members of Phi Chi Theta to take the time to apply for the scholarships that the organization offers. The demonstration of leadership, hard work and initiative that it shows will not only prove something to the national chapter, but will almost certainly reveal the strength of commitment within yourself. The process is a reflection of life: hard work really does pay off.



---

## 2010 Anna E. Hall Memorial Scholarship Sara Mitchell

As a member of Phi Chi Theta for more than two years, I am honored to receive the Anna E. Hall Memorial Scholarship for the 2010-2011 academic year. The scholarship will assist me in continuing my education in hopes of earning a CPA certification. When completing the application for Phi Chi Theta scholarships, it is important to start early. The application requires essays, recommendation letters, along with a transcript.

The process may seem tedious, but the reward can be well worth the effort. Beginning the process at least two months in advance with allow you to prepare and review your essays, request your transcript to be sent, and let your professor or employer have ample time to consider your best qualities to submit to the scholarship committee in a recommendation letter.



---

## 2010 Helen D. Snow Memorial Scholarship Barbara Menico

It is an honor and a pleasure to have been awarded the 2010 Helen D. Snow Memorial Scholarship. I am currently enrolled in an accelerated BS/MBA program at Drexel University and am in my final year working towards my MBA. This scholarship will help me complete my studies and allow me to enter the world of business. I am also a founding member of the Zeta Delta chapter of Phi Chi Theta and serving as Alumni Director for the 2010-2011 school year. I am very excited for the upcoming year and to keep the alumni updated on the current Phi Chi Theta happenings.

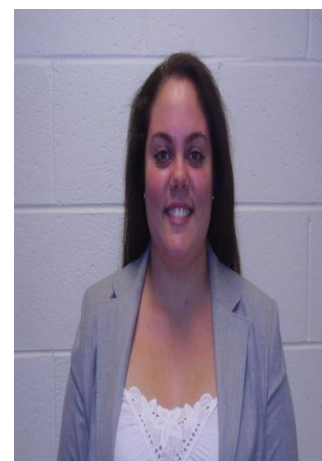
Applying for a Phi Chi Theta scholarship was not only a painless process but enjoyable as well. As I sat writing the essays I began to think about all of the events and friends I made through the fraternity. I realize that this organization has played a major role

in my college career and I look forward to seeing us grow further. I would also encourage more members to apply for the scholarships as it is an honor to be chosen as a recipient.

This scholarship not only will help pay for my tuition but will also be a great addition to my resume.

Being awarded the Helen D. Snow Memorial scholarship attests to all of the hard work I have put into the organization as well as in the classroom. My resume will now have evidence that support all of my efforts throughout the years.

After graduating this year I plan to enter the marketing field. In the future I would like to start my own marketing consulting firm. I thank and am grateful to the Phi Chi Theta Foundation for helping me take one more step towards my dream!



## Phi Chi Theta's the newest Foundation Trustee Andrew Noh

### Interview questions – Frances Spencer to Andrew Noh

Andrew Noh is one of the newest Foundation Trustees, but he is no stranger to Phi Chi Theta. He previously was a Foundation scholarship winner, and will soon join the Chicago Alumni Chapter. Andrew is a second year Associate Consultant at Bain and Company, and resides in Chicago in the south loop area.

**You are a fairly recent graduate; what class was your most difficult, and why?**

At Michigan, we had a set of classes called “Law, History and Communications.” It was part of our first- year business curriculum to take an LHC class on presentations and public speaking. When first coming to college, I was absolutely atrocious at public speaking. I remember once after giving a presentation, my friends came up to me concerned and asking whether I had cried on stage – my voice had quivered so much! LHC really pushed me to develop the confidence to speak in front of audiences, and it’s something I now enjoy.

**What were your main considerations in selecting your current professional position?**

The opportunity to learn and the flexibility to gain transferrable skillsets. As a consultant, where our job’s tasks change from case to case and client to client, there is no shortage of learning opportunities. I fear the day that I stop learning and become complacent. Luckily, a year into my job, I have no such worries. Likewise, I wanted to find a job where I could learn skills and abilities that I could take into any other job or situation in the future. The things I learn as a consultant – the importance of data, the ability to analyze situations and synthesize recommendations – are going to be valuable to me wherever I go.

**What is your favorite family memory while growing up?**

Our yearly ski vacations during the December holidays. For as long as I can remember, I’ve been on skis or a snowboard, and for as long as I’ve been able to do that, my family has made an effort to go on a ski vacation somewhere new each year. I’m coming up on my first winter holidays since working, and I’m anxious to see how those plans will work out this year. Cold as Chicago winters may be, it still remains my favorite season because of the memories associated with it.

**You’ve been a scholarship winner and participated on the scholarship review committee this year. What words of encouragement would you give to collegiate regarding their preparation of future applications?**

Give it a try! It is surprising how many high potential candidates discount themselves for a scholarship before even applying. Realize that as part of Phi Chi Theta, you are already a distinguished student, and you are applying to a scholarship committee full of people that have experienced PCT in similar ways that you have. It is not an anonymous panel of readers, but rather people that enjoy relating to the future goals and current experiences you write about in your essays.

**Given any spare time in your schedule, what is your hobby or means of recreation? Reading? A specific sport ? (soccer, bowling, cycling, etc.) Movies? Travel?**

I love reading. I want a Kindle badly, but would hate to give up the feeling of creasing the binding of a new book or the sound of turning over a new page. Aside from maybe a round of golf, I can’t think of a nicer way to wake up on a Saturday morning than to a cup of coffee and a good book into lunch.

**The current economy is a tough one for many students with higher costs, unavailability of part-time jobs, etc. What advice would you offer to them?**

I recently read an article that one externality of the current economy was that people were more willing to seek jobs in social development and non-profits than ever before. Apparently, application rates for programs like TFA and the Peace Corps are at all-time highs. I think it is an ideal opportunity to assess your passions and see whether that “coveted” job is really one you want to pursue, or if you feel that this is as good a time as any to look into a career you are passionate about, but might not have thought would be your first stop.

**If you could live anywhere in the world, where would you choose to live and why?**

Tough question! I just discovered the fun of international travel last year, and I haven’t seen enough of the world yet to make a confident pick. For now, I think I would be happy living in a town like Sausalito, right off the Bay Area.

**What is your pet peeve when dealing with people?**

Passive aggressive behavior. I am certain I’ve been as guilty of it as anyone else, but I really try to avoid passive aggressive situations. It may be awkward or uncomfortable at first, but I find that addressing areas of frustration or stress early on with people goes a long way in healthy relationships. In my opinion, it’s much better to confront a person or situation early on instead of letting it fester and risk becoming bitter.

**As a new Foundation Trustee how would you best convey to others the importance of supporting the Foundation and its programs?**

For my essay in response to receiving my scholarship, I wrote about the importance of “paying it forward”. The success of a fraternity like Phi Chi Theta and the efforts of its Educational Foundation are based on that principle. As brothers and sisters of PCT, we’ve all been blessed in a diversity of ways. Maybe it was through new friends on campus. A new job opportunity. A scholarship. Just as I gladly received those benefits with the help of the Foundation, I’m hoping I can set an example in giving it back to future members.