



In This Issue

President's Message – 1

Class of 2011 Honor Roll
of Graduates – 2

Unstoppable Attitude – 5

Where Are They Now – 6

2011 Regional
Conferences – 9

Donor Form



Opening the Door to New Opportunities



Congratulations to the Class of 2011. The arrival of Spring and graduation season is always a time for opening the door to

new opportunities and fresh perspectives.

This is an exciting time to be launching your career or taking the next steps in achieving your professional development goals. Your involvement in Phi Chi Theta, the skills you have gained, and the network you have established will enable you to face these new challenges and succeed.



In a time where companies and government are expecting their employees to do more with less, you have greater opportunities today to take on the challenging assignments out-of-the-gate and become a thought leader and immediate contributor to the team. Your ability to hit the ground running will enable you to be a key contributor in shaping, developing, and implementing innovative

solutions. By leveraging and listening to new ideas, applying an "unstoppable attitude" and the connectedness of our global society, you have the potential to come up with solutions that improve productivity, save money, or even transform "the way it has been before" into the new normal."



Remaining true and loyal to the ideals of Phi Chi Theta is a lifetime commitment that each of us made when we were initiated into this great Fraternity. It is a commitment to a set of principles that extend beyond the campus of your University and into your personal and professional life. No matter the life challenges you face going forward, always aspire to greatness through



achievement, sincerity, professionalism, initiative, reliability, alertness, tact, individuality, and optimism in everything that you do. It is these characteristics that will make you a great business leader, role model, mentor, and teacher.



In this special issue of *eEdNews*, we celebrate the success and next steps for the Class of 2011. We also catch up with the 2009 scholarship recipients to see "Where Are They Now?", and

how the Phi Chi Theta experience has helped them in their professional and personal growth. Also, Peter Miller (Gamma Iota, Advisor) will share with you advice on how an "Unstoppable Attitude" will enable you to face the challenges and opportunities in store for you.

Congratulations on your achievements thus far, and the doors of opportunity that you have already opened. You have a lifetime of opportunities ahead of you, and the skills you need to succeed in the global marketplace. Wherever your next steps take you, may they present you with the challenges and opportunities that will enable you to succeed in building your own future.

Greg Holden (Delta Sigma) is a Life Member of Phi Chi Theta and is President of the Phi Chi Theta Educational Foundation. Greg is an IT Program Manager for Booz Allen Hamilton in McLean, VA. He can be reached at holden.greg@bah.com

Honor Roll of Graduates – Class of 2011



Rachel Amice (Alpha Iota, Pennsylvania State University)

B.S., Marketing. Employed at Altria Sales & Distribution as a Territory Sales Manager.



Altria

Jen Balisi (New York Beta, New York University) - B.S., Marketing & International Business. Traveling through Europe and Southeast Asia before starting as a Marketing Analyst in the Consumer Card Services Group at American Express.



Paul Benario (Alpha Upsilon, Bradley University) - B.S., Management Information Systems. Employed at Avanade, Inc. in their Chicago Office as a Business Analyst. Avanade is an IT Consulting firm, which is a joint venture of Accenture and Microsoft based in Seattle, WA.



Lucinda Boers (Zeta Epsilon, Grand Valley State University) - B.S., Political Science. Plan to take six months off after graduation to travel. During my travels, I plan on finding a place where I would like to spend more time and find a job. Eventually, I am hoping that the job turns into a career, and I also plan on attending graduate school for a MBA



Jacqueline Chan (New York Beta, New York University) - B.S., CPA Accounting, International Business. Will be working for KPMG and attending graduate school to receive Masters of Science in Accounting.



Joanna Demko (New York Beta, New York University) - B.A., Economics; East Asian Studies. Employed at Goldman Sachs.

Erin Drone (Delta Sigma, James Madison University) - B.B.A., Finance. Still looking for a full-time job in the Washington DC metro area.



Jaision Ellickal (Zeta Gamma, University of Illinois, Urbana-Champaign) - B.S., Finance. Trying to get a job at the Chicago Fed or in the commercial banking industry. Will also be studying for the CFA Level 1 exam.

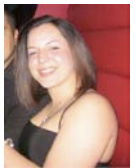
Katelyn Evans (Zeta Gamma, University of Illinois, Urbana-Champaign) - B.S., Accountancy. Interning at a medium size accounting firm over the summer. Will be returning to the University of Illinois at Urbana-Champaign to earn a Masters Degree in Accounting Science. Plan to sit for the CPA post graduation from the master's program.



Lindsay Fuller (Zeta Epsilon, Grand Valley State University) - B.S., Allied Health Science. Searching for job in Business Administration. Within the next year plan to go to graduate school in order to earn either an MBA or Masters Degree in Health Administration.



Derick Gavidia (Gamma Iota, University of Colorado Denver) B.S., Accounting. Plan to sit for the CPA exam, and working for the State of Colorado. Will be starting a Masters Degree in Accounting shortly.



Gabrielle Gibbon (Gamma Iota, University of Colorado Denver) B.S., Business Management. Continuing my career with Wells Fargo Bank and hopefully doing a lot of traveling!



Chelsea Gill (Alpha Iota, Pennsylvania State University) B.S., Management and Organization. Tour Europe and hopefully find a position in Ethics and Compliance.



Nicole Gober (Alpha Iota, Pennsylvania State University) - B.S., Accounting. Looking for a job and working on applying for graduate schools.

Pamela Goerlich (Alpha Upsilon, Bradley University) - B.S., Actuarial Science - Business. Plan to enter the Insurance industry, most likely in a property and casualty company.



Tony Greif (Zeta Gamma, University of Illinois, Urbana-Champaign) B.S., Accountancy. Employed at KPMG in Chicago as an Audit Associate.



Christina Grohmann (Alpha Upsilon, Bradley University) - B.S., Business Management and Administration. Potential job opportunity or an internship opportunity with two different companies.

Rick Hausmann (Zeta Gamma, University of Illinois, Urbana-Champaign) MA, Accounting. Employed at PriceWaterhouseCoopers as a Tax Associate.





Riddhima Hinduja (New York Beta, New York University) - B.S., Finance and Marketing. Employed at Barclays Capital as a Credit Risk Analyst.

Seo Yeong Hwang (New York Beta, New York University) B.S., MS, Accounting. Employed at Deloitte tax.



Regina Law (New York Beta, New York University) - B.S., Finance, Marketing. Employed at American Express, Global Merchant Services Division as a Marketing Analyst.

Daniel Martin (Zeta Eta, Indiana University Bloomington) - B.A., Accounting and Finance. Employed at Houlihan Lokey Investment Bank as an analyst in the Chicago office.



HOULIHAN LOKEY

Jessica Matthews (Zeta Iota, University of Michigan - Dearborn) - B.B.A., Marketing. Aspiring to become an events coordinator and find a job that I love going to everyday.



Kelli Oakwood (Alpha Upsilon, Bradley University) – B.S., Marketing and Philosophy. Will be attending Graduate School, and have been accepted to NYU for Music Business. My ultimate dream is to start my own record label catering to artists of both the indie rock and rap genres.



Ashley Pennell (Zeta Gamma, University of Illinois, Urbana-Champaign) B.S., Accountancy. Will be going to graduate school at the University of Illinois to receive a Masters Degree in Accountancy.



Rachel Petty (Epsilon Phi, Michigan State University) - B.A., Marketing. Applied to many different companies and waiting for a call back from Google's Ann Arbor office.

Marni Roisman (Zeta Eta, Indiana University Bloomington) - B.A., Journalism. Looking for a job at advertising agencies in Chicago.

Yulia Shvetsova (Gamma Tau, University of Montevallo) - B.B.A., Finance. Applying to Ivy League graduate schools including Wharton at Univ. of Pennsylvania and Harvard. Backup plan will probably be to attend the Univ. of South Carolina.

Steven Stutz (Alpha Nu, University of North Texas) - B.B.A., Finance. Searching for a job in corporate finance or management.



Graduating? Take a couple of minutes to tell us about your Post Graduation Plans. Visit our web site, and fill out our online [Post Graduation Plans](#) survey



It has been many years ago that I trained for and competed in the IronMan® Triathlon, but the lessons I learned are still fresh today. Now

as then, it is much more than a race consisting of 2.4 miles rough water swim in the ocean, bicycling 112 miles in the lava fields of Hawaii, and a 26.2 mile run. I have many memories that I particularly remember. One was seeing extremely healthy people “built like trees,” and an instant seemingly “long time” camaraderie with fellow athletes I met and knew for only the four days that I was on the island. I also remember the apprehension I had with the long distance I swam from the safety of the rocky shore line, and seeing the bottom of the ocean some ninety feet below. I remember

the wind that always seemed against me



while bicycling over newly black topped road that gripped my tires and the searing heat through black lava fields that made it seemed like I was running through the bottom of a charcoal grill. Most of all, I remember the year of training marked by a consistent improvement in endurance fitness, skills in the three disciplines, and learning my “rules” to maintain a “can do” positive attitude, no matter the degree of difficulty and adversity. I am proud to share some of those “rules” with my Phi Chi Theta colleagues. I think you will find that they are already embedded in the culture of Phi Chi Theta and you really do not need to compete in the Ironman® to live by them.



The first rule that comes to mind is to surround yourself with positive supporting people. I had the

honor of attending the Gamma Iota celebration of Founders' day and their pledge ceremony Friday, March 04, 2011. In attendance were a great group of Gamma Iota Active Members, Alumni Members, New Pledges, myself, and Mary Ellen Lewis. We all left the celebration with our own great feelings of accomplishments and directions for the

future. What we all left that celebration with was the joy of being part of a positive supporting group. I encourage all of our Phi Chi Theta members to take notice as you are in your own chapter meetings, the synergistic positive feeling with your chapters and how good you feel knowing of the fraternal support that you carry throughout each day!

The second rule is to mentally place yourself at the “finish line.” Too often we look at our goals with a lens that is blurred by all of the obstacles we might encounter. For example, as the end of the semester or quarter, students often start focusing on their limited time, their desire to be outdoors,

their hours they need to study, keeping up with family and friends while they study, etc. Instead, I suggest picturing yourself at the “finish line.” You are done with the final; you are relaxed and maybe joyous. Now, mentally turn around and see the things that were obstacles, at the “starting line,”



Aloha Tower, Hawaii. Original finish line for the IronMan Triathlon

are really your stepping stones from your “finish line.” Now you can see how you got over them, as opposed to how they stopped you. Focus on the “finish line” is so important. I personally need the focus of a “finish line,” so that I can mentally turn around and change those “obstacles” into “stepping stones.” Once you can mentally place yourself at the “finish line,” every crossing of a “stepping stone” becomes a celebration. Thus, “celebrate your goals before you achieve them.” Reward yourself after a couple hours of studying, then go back and progress towards your “finish line.”



The third rule is being open to be inspired. The sources of inspiration

are endless. The key is merely to be open to inspiration. My children inspire me greatly! My co-workers who really “show-up” in life have inspired me, and my current students and colleagues at the University of Colorado Denver, School of Business, greatly inspire me. My latest source of

inspiration is being part of Phi Chi Theta. I needed only to sit in the back of the room at Founders' Day to be inspired just thinking of what everyone of our members, past, present and future, have and will give of themselves to keep the ideals of Phi Chi Theta a model of inspiration for college campuses and business

organizations for decades to come.

Peter Miller (Gamma Iota) is the Faculty Advisor and an honorary member of the chapter. He is a Lecturer of Marketing at the University of Colorado Denver. Peter can be reached at peter.miller@ucdenver.edu

Where Are They Now...2009 Scholarship Recipients



Melissa Bolin (Gamma Iota)
Recipient of the 2009 Naomi L. Satterfield Memorial Scholarship

I am currently a Loan Officer at Boulder Municipal Employees Federal Credit Union, where I have worked the past 3 years. I graduated in December 2007 with my BSBA in International Business and December 2010 with

a MS in Finance. I am not presently an officer of any chapter of Phi



Chi Theta, but I am still active in both Denver Alumni and Gamma Iota Chapters as community service director and event coordinator. I am also on the Gamma Iota Bylaws Committee and the National Chapter Ritual Committee. I am single with no plans to start a family. My Phi Chi Theta Family is more than enough for me.

The Phi Chi Theta experience has certainly helped me after college. Now that I have been through the chapter twice, as an undergraduate and again in graduate school, I have learned the importance of juggling many activities and making relationships during school. You never know who will be successful in the future and in my experience, the fraternity is one of the best ways to build relationships on campus – this coming from a very active

member of five different campus organizations. Indeed, most of my personal friends are or have been involved with the fraternity at one time or another. The fraternity has also helped me maintain my sanity by keeping me busy after I graduated from graduate school. Though I work full time, that is not enough to keep me busy, even though I have two other jobs. If it were not for all of the fraternity committees and friends I have made, I would be extremely bored, sad, and lacking direction in life.

I am no longer in school, but I am planning to return for a MA in Economics at some point, which will complete my goal of earning 5 diplomas (counting high school and community college). I also plan to complete my life goals of learning 7 languages (currently at three) and traveling to 100 countries (currently at 14). However, my main goal in life is to serve as an example of leadership, charity and integrity for others. Service to others is a large part of that.

I am grateful for receiving the Naomi Satterfield Memorial Scholarship. Since receiving my undergraduate degree, I have been able to help Gamma Iota with seed money for some of their fundraisers. The picture shown here was taken at the 2010 Phi Chi Theta National Meeting when I introduced Peter Miller at the Foundation's Luncheon.





Johnny Crane (Zeta Epsilon)

Recipient of the 2009 Anna E. Hall Memorial Scholarship

Since receiving the scholarship, I have graduated with a bachelor's degree in Finance from Grand Valley State University. After college, I accepted a position as a supply chain analyst at Mill Steel Company in Grand Rapids, Michigan until December 2010. In the beginning of December, I moved to Detroit, Michigan to work as a Financial Analyst for Robert Bosch where my responsibilities include overhead and product line analysis, month end reporting and business plan development and consolidation.



BOSCH

I believe that being a part of Phi Chi Theta has contributed enormously to the success I have had after college. Being a member expanded my network and also gave me experiences outside of the classroom that prepared me for the business world. Furthermore, winning the Anna E. Hall Memorial Scholarship not only assisted with my tuition but it was a great addition to my résumé that employers noticed.



Melissa Hall (Epsilon)

Recipient of the 2009 Irene M. Mever Memorial Scholarship

Hello Everyone! I am the Phi Chi Theta's Eastern Regional Director. I am a recent graduate of the University of Pittsburgh, where I earned a double major in Accounting and Management. I joined Phi Chi Theta my freshman year and was active for the next 3 years. I served various roles in my chapter including Assistant Pledge Educator, Social Committee Chair, and was also President. I am currently working at Westinghouse Electric Company as a Project Planner doing project controls/scheduling. I am living outside of Pittsburgh and keeping busy with my new puppy (Shih Tzu) and planning the 2011 **Eastern Regional Conference in Baltimore, MD this summer, August 5 – 6.**



Westinghouse

I look back fondly at my years as a collegiate. I took advantage of many opportunities, including executing my planning skills that I am now able to use in the corporate world. I also took advantage of the scholarship program offered through the Phi Chi Theta Educational Foundation and was grateful for being chosen to receive it. It was (and is) such a high honor. It was a once-in-a-lifetime opportunity to have the scholarship program not only an intangible part of Phi Chi Theta, but a tangible part in helping me complete my degree.

All of your scholarship resources are available online at
http://www.phichitheta.org/?page=edu_apply

Applications are due May 1 and should be e-mailed to:
PCTEdScholarship@aol.com



Lindsay Solomon (Alpha Iota)

Recipient of the
2009 Trustees' Scholarship

After graduating from Penn State in December 2009, I have since started my career with Ernst & Young in their Advisory-Risk practice. The Risk practice at Ernst & Young primarily provides services including enterprise-wide governance, risk, and compliance along with Internal Audit and Internal Controls. I've learned so much in the short time that I've been with the firm and have had the opportunity to work with a variety of companies including the Washington Post's subsidiary Kaplan University, NCO, Inc. and SKF USA, Inc. I've also been back on the Penn State campus for many different recruiting events and co-led Ernst and Young's Your World, Your Vision Competition for Penn State.



In my spare time, I have been studying for the CPA Exam, but have also found time for some fun including attending a Philadelphia Phillies Spring Training game in Clearwater, FL with my boyfriend. I've also remembered the importance of giving back to the community by getting involved with programs at my church as a Senior High Youth Leader and participating in various service events including "Stop Hunger Now" Event where we packaged 10,000 meals for starving people around the world.

My involvement in Phi Chi Theta at Penn State and winning the 2009 Trustees' Scholarship has continued to shape my life after college. I use the leadership, professional, and social skills that I gained from my involvement in Phi Chi Theta on a daily basis. The experiences in PCT gave me the confidence and skill sets to strive towards my goals in life and to realize my full potential to succeed.

Giving Back to Next Generation

As you transition to becoming Phi Chi Theta alums and begin the next phase of your life we hope that you will keep those wonderful Phi Chi Theta memories and lifelong friendships alive. Make a donation today to the **Campaign for the Chapters**,

and you are investing in the scholastic and educational opportunities for the next generation of Phi Chi Theta's at your alma mater. 50% of your tax-deductible donation goes right back to your alma mater chapter for them to use in sponsoring future educational programs.



Make a pledge today to donate \$50 by December 31, 2011. That means \$25 will go right back to your alma mater chapter for quality educational programming.

To help ease the financial strains of starting your new career, there are several options available to you for fulfilling your donation:

Credit Card – make a secure recurring donation [online](#), through JustGive.org, of \$10/month for 5 months

Check or Money Order – complete the donor form on page 10, indicate the number of easy installments, and mail to **1508 East Bellline Road Suite 104, Carrollton, TX 75006**.

*Please be sure to specify **50/50 [Chapter-University]** so your donation counts towards your alma mater and/or designated active collegiate Chapter.*

Your donation today will help to ensure that future generations have the same opportunities, positive experiences, and wonderful lifelong friendships and memories that come from being a member of Phi Chi Theta.

The Foundation and Phi Chi Theta's Regional Director's have been collaborating on a "Life Skills" outreach program that the Foundation is sponsoring at the upcoming 2011 Regional Conferences. Dawn Gabriele (Beta Chi) and each of the Regional Directors have been working, over the past 6 months, to develop an interactive and engaging program between PCT alums and the collegiate in charting a course to a successful career and avoiding the derailers. Alums will share skills and lessons learned gained from their own experiences in transitioning from college life to the workplace.

The Central Region held its Regional Conference on April 2, in Shiller Park, IL, where "Life Skills - Taking it to the Next Level" was the subject of the Alumni Panel. Over 80 collegiate and alumni members attended a panel discussion that was moderated by Board member Fran Spencer (Delta). Panelists represented a variety of professional backgrounds ranging from a representative of the NFL's Chicago Bears football team, to the Veteran's Administration and the automotive industry. The panelists included:

Joseph Jang (Zeta Beta),
Huron Consulting Group



William Crane (Epsilon Gamma),
Bright Automotive

Chris Wang (Zeta Gamma),
Ernst and Young



Melissa Peckham (Epsilon Gamma)
Chicago Bears

Gary Hodge (Epsilon Beta),
U.S. Dept. of Veterans' Affairs.



Each panelist gave a brief review of their résumés and professional accomplishments and a lively discussion followed regarding such

questions as "What skills have you found to be most valuable in the work force?" and "What is the most challenging part of your job?" "Lightening Questions" were asked of each panelist regarding their plans 5 years in the future. This gave an added dimension to their other answers regarding their "real world" presentations. Fran wrapped up the panel discussion by giving a brief overview of the Foundation and its scholastic and educational programs.

The alumni panel was well received, and similar plans are well underway for the remaining Regional Conferences planned for this summer.

Western Region (July 29-30 in San Mateo, CA)

David Casey, IRIS Editor, will speak on "How to Secure a Job Using Social Media." Social media is becoming more important in our daily life and can be a great way to find a job. David will share his insight into leveraging social media outlets to create a polished and professional look needed to attract recruiters and potential employers.

Eastern Region (August 5-6 in Baltimore, MD)

"Life Skills - Surviving Life after College" is the subject of the Alumni Panel, sponsored by the Phi Chi Theta Educational Foundation. The panelists include **Susan Zhou**, Human Resource Consultant at Universities and **Christopher Lenoci**, a recent graduate.

Southern Region (July/August TBD in Atlanta, GA)

The "Life Skills" Alumni Panel is being finalized and Bill Schutte, Southern Regional Director is working with alums **David Hackney (Upsilon)**, **Kaycia Rhone**, **Tim Wessel**, **Kate Grix** and **Whitney Davison (Upsilon)** to join him on the panel.

For more information and to register for the upcoming 2011 Regional Conferences, please visit the Phi Chi Theta web site at www.phichitheta.org and select Meetings.



Phi Chi Theta Educational Foundation Donation Form

Name: _____

Address: _____

City: _____ State/Zip/Postal
Country: _____ Code: _____

Phone: _____ E-mail: _____

Chapter: _____ Employer/
Job Title: _____

I want to make a tax-deductible contribution of: \$25 \$50 \$100 \$250

\$500 \$1,000 Other: \$ _____ Yes, my company has a matching program.
I will apply for the matching grant.

Enclosed is my check in the amount of: \$ _____

I wish to pay the remaining balance in 4, 6, or 12 easy installments of: \$ _____

Please use my gift for the following purposes (select one or more):

\$ _____ Naomi L. Satterfield Memorial Scholarship

\$ _____ Irene M. Meyer Memorial Scholarship

\$ _____ Dr. Kay Durden Memorial Scholarship

\$ _____ Trustees' Scholarship

\$ _____ Anna E. Hall/Helen D. Snow Memorial Scholarship

\$ _____ 50-50 Campaign for the Chapters
Please set aside 50% of my donation to the _____ Chapter

\$ _____ Professional Certification Scholarship

\$ _____ Educational Programs and Training

\$ _____ General Fund

Please make check payable and send to:
Phi Chi Theta Educational Foundation
1508 East Beltline Road, Suite 104
Carrollton, TX 75006

THANK YOU!